

DNA Polymerase beta Rabbit Monoclonal Antibody

CAB2412



Product Information

Size:

20uL, 50uL, 100uL, 200uL

Observed MW:

42KDa

Calculated MW:

38kDa

Applications:

WB IHC

Reactivity:

Human, Mouse, Rat

Protein Background

The protein encoded by this gene is a DNA polymerase involved in base excision and repair, also called gap-filling DNA synthesis. The encoded protein, acting as a monomer, is normally found in the cytoplasm, but it translocates to the nucleus upon DNA damage. Several transcript variants of this gene exist, but the full-length nature of only one has been described to date. [provided by RefSeq, Sep 2011]

Immunogen information

Gene ID:

5423

Uniprot

P06746

Synonyms:

Antibody Information

Recommended dilutions:

WB 1:500 - 1:2000 IHC

1:50 - 1:200

Source:

Rabbit

Isotype:

IgG

Purification:

Affinity purification

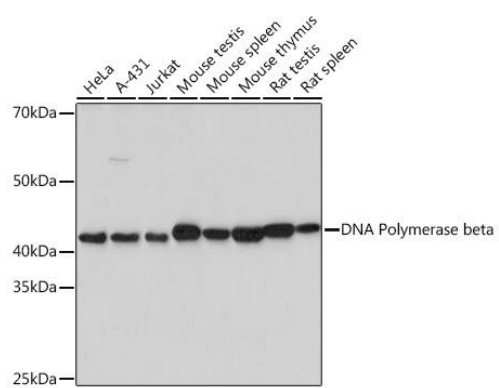
Immunogen:

A synthesized peptide derived from human DNA Polymerase beta

Storage:

Store at -20°C. Avoid freeze / thaw cycles. Buffer: PBS with 0.02% sodium azide, 0.05% BSA, 50% glycerol, pH7.3.

Product Images



Western blot - DNA Polymerase beta Rabbit mAb (CAB2412)