

# SLC7A11 / xCT Rabbit Monoclonal Antibody



CAB2413

## Product Information

### Size:

20uL, 50uL, 100uL, 200uL

### Observed MW:

37KDa

### Calculated MW:

55kDa

### Applications:

WB

### Reactivity:

Human, Mouse, Rat

## Antibody Information

### Recommended dilutions:

WB 1:500 - 1:2000

### Source:

Rabbit

### Isotype:

IgG

### Purification:

Affinity purification

## Protein Background

This gene encodes a member of a heteromeric, sodium-independent, anionic amino acid transport system that is highly specific for cysteine and glutamate. In this system, designated Xc(-), the anionic form of cysteine is transported in exchange for glutamate. This protein has been identified as the predominant mediator of Kaposi sarcoma-associated herpesvirus fusion and entry permissiveness into cells. Also, increased expression of this gene in primary gliomas (compared to normal brain tissue) was associated with increased glutamate secretion via the XCT channels, resulting in neuronal cell death. [provided by RefSeq, Sep 2011]

## Immunogen information

### Gene ID:

23657

### Uniprot

Q9UPY5

### Synonyms:

CCBR1; xCT

### Immunogen:

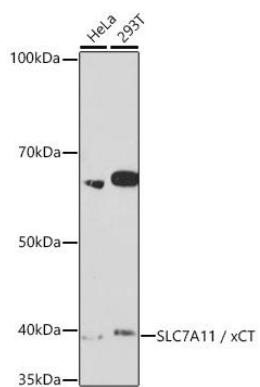
A synthesized peptide derived from human SLC7A11 / xCT

### Storage:

Store at -20°C. Avoid freeze / thaw cycles. Buffer: PBS with 0.02% sodium azide, 0.05% BSA, 50% glycerol, pH7.3.

## Product Images

---



Western blot - SLC7A11 / xCT Rabbit mAb (CAB2413)