

# SQLE Rabbit Polyclonal Antibody



CAB2428

---

## Product Information

### Size:

20uL, 50uL, 100uL, 200uL

### Observed MW:

71kDa

### Calculated MW:

63kDa

### Applications:

WB IHC IF

### Reactivity:

Human, Mouse, Rat

## Antibody Information

### Recommended dilutions:

WB 1:500 - 1:2000 IHC 1:50  
- 1:100 IF 1:50 - 1:100

### Source:

Rabbit

### Isotype:

IgG

### Purification:

Affinity purification

## Protein Background

Squalene epoxidase catalyzes the first oxygenation step in sterol biosynthesis and is thought to be one of the rate-limiting enzymes in this pathway.

## Immunogen information

### Gene ID:

6713

### Uniprot

Q14534

### Synonyms:

SQLE

### Immunogen:

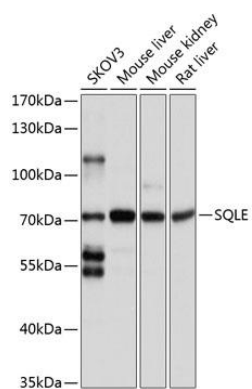
Recombinant fusion protein containing a sequence corresponding to amino acids 143-400 of human SQLE (NP\_003120.2).

### Storage:

Store at -20°C. Avoid freeze / thaw cycles. Buffer: PBS with 0.02% sodium azide, 50% glycerol, pH7.3.

## Product Images

---



Western blot analysis of extracts of various cell lines, using SQLE antibody (CAB2428) at 1:1000 dilution. Secondary antibody: HRP Goat Anti-Rabbit IgG (H+L) (CABS014) at 1:10000 dilution. Lysates/proteins: 25ug per lane. Blocking buffer: 3% nonfat dry milk in TBST. Detection: ECL Basic Kit (CABM00020). Exposure time: 5s.