

c-Fos Rabbit Polyclonal Antibody



CAB2444

Product Information

Size:

20uL, 50uL, 100uL, 200uL

Observed MW:

55-60KDa

Calculated MW:

28kDa/36kDa/40kDa

Applications:

WB IHC

Reactivity:

Human, Mouse

Antibody Information

Recommended dilutions:

WB 1:500 - 1:2000 IHC 1:50
- 1:200

Source:

Rabbit

Isotype:

IgG

Purification:

Affinity purification

Protein Background

The Fos gene family consists of 4 members: FOS, FOSB, FOSL1, and FOSL2. These genes encode leucine zipper proteins that can dimerize with proteins of the JUN family, thereby forming the transcription factor complex AP-1. As such, the FOS proteins have been implicated as regulators of cell proliferation, differentiation, and transformation. In some cases, expression of the FOS gene has also been associated with apoptotic cell death.

Immunogen information

Gene ID:

2353

Uniprot

P01100

Synonyms:

FOS; AP-1; C-FOS; p55; c-Fos

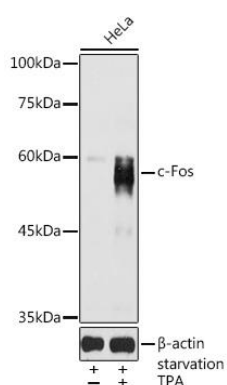
Immunogen:

A synthetic peptide corresponding to a sequence within amino acids 90-190 of human c-Fos (NP_005243.1).

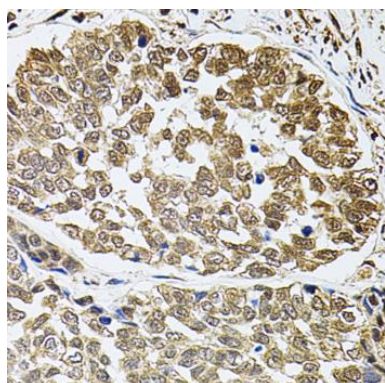
Storage:

Store at -20°C. Avoid freeze / thaw cycles. Buffer: PBS with 0.02% sodium azide, 50% glycerol, pH7.3.

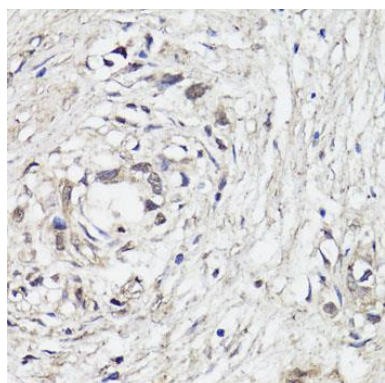
Product Images



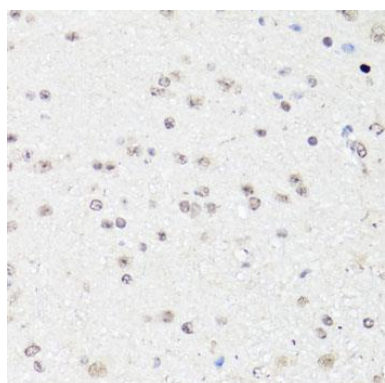
Western blot analysis of extracts of HeLa cells, using c-Fos antibody (CAB2444) at 1:1000 dilution. HeLa cells were treated by PMA/TPA (200 nM) at 37°C for 30 minutes after serum-starvation overnight. Secondary antibody: HRP Goat Anti-Rabbit IgG (H+L) (CABS014) at 1:10000 dilution. Lysates/proteins: 25ug per lane. Blocking buffer: 3% nonfat dry milk in TBST. Detection: ECL Basic Kit (CABM00020). Exposure time: 30s.



Immunohistochemistry of paraffin-embedded human esophageal cancer using FOS antibody (CAB2444) at dilution of 1:100 (40x lens).



Immunohistochemistry of paraffin-embedded human gastric cancer using C-FOS antibody (CAB2444) at dilution of 1:150 (40x lens).



Immunohistochemistry of paraffin-embedded mouse brain using C-FOS antibody (CAB2444) at dilution of 1:150 (40x lens).