

mTOR Rabbit Polyclonal Antibody



CAB2445

Product Information

Size:

20uL, 50uL, 100uL, 200uL

Observed MW:

289kDa

Calculated MW:

288kDa

Applications:

WB IF IP

Reactivity:

Human, Mouse, Rat

Protein Background

The protein encoded by this gene belongs to a family of phosphatidylinositol kinase-related kinases. These kinases mediate cellular responses to stresses such as DNA damage and nutrient deprivation. This protein acts as the target for the cell-cycle arrest and immunosuppressive effects of the FKBP12-rapamycin complex. The ANGPTL7 gene is located in an intron of this gene.

Immunogen information

Gene ID:

2475

Uniprot

P42345

Synonyms:

FRAP; FRAP1; FRAP2; RAFT1; RAPT1; SKS; mTOR; MTOR

Antibody Information

Recommended dilutions:

WB 1:500 - 1:2000 IF 1:50 -
1:200 IP 1:50 - 1:100

Source:

Rabbit

Isotype:

IgG

Purification:

Affinity purification

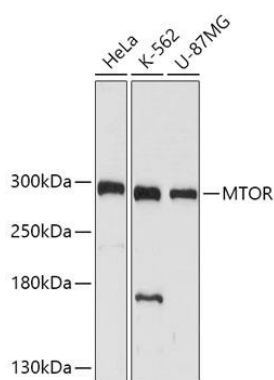
Immunogen:

Recombinant fusion protein containing a sequence corresponding to amino acids 1-300 of human mTOR (NP_004949.1).

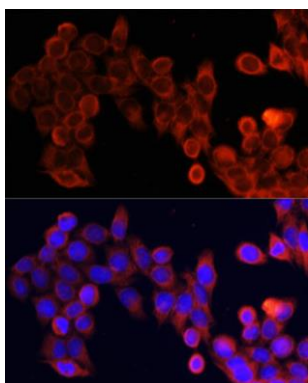
Storage:

Store at -20°C. Avoid freeze / thaw cycles. Buffer: PBS with 0.02% sodium azide, 50% glycerol, pH7.3.

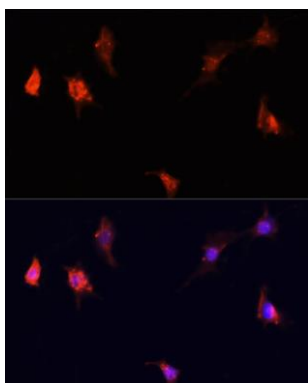
Product Images



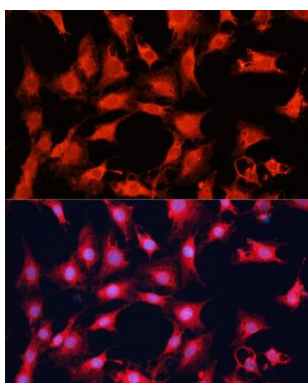
Western blot analysis of extracts of various cell lines, using mTOR antibody (CAB2445) at 1:1000 dilution. Secondary antibody: HRP Goat Anti-Rabbit IgG (H+L) (CABS014) at 1:10000 dilution. Lysates/proteins: 25ug per lane. Blocking buffer: 3% nonfat dry milk in TBST. Detection: ECL Basic Kit (CABM00020). Exposure time: 10s.



Immunofluorescence analysis of HeLa cells using mTOR antibody (CAB2445) at dilution of 1:100. Blue: DAPI for nuclear staining.



Immunofluorescence analysis of PC12 cells using mTOR antibody (CAB2445) at dilution of 1:100. Blue: DAPI for nuclear staining.



Immunofluorescence analysis of C6 cells using MTOR antibody (CAB2445) at dilution of 1:100. Blue: DAPI for nuclear staining.