

IκBAlpha Rabbit Polyclonal Antibody



CAB2457

Product Information

Size:

50uL, 100uL

Observed MW:

36kDa

Calculated MW:

35kDa

Applications:

WB IHC IF IP FC

Reactivity:

Human, Mouse, Rat, Pig

Protein Background

This gene encodes a member of the NF-kappa-B inhibitor family, which contain multiple ankrin repeat domains. The encoded protein interacts with REL dimers to inhibit NF-kappa-B/REL complexes which are involved in inflammatory responses. The encoded protein moves between the cytoplasm and the nucleus via a nuclear localization signal and CRM1-mediated nuclear export. Mutations in this gene have been found in ectodermal dysplasia anhidrotic with T-cell immunodeficiency autosomal dominant disease.

Immunogen information

Gene ID:

4792

Uniprot

P25963

Synonyms:

IKBA; MAD-3; NFKBI; IKB alpha; NFKBIA; EDAID2

Antibody Information

Recommended dilutions:

WB 1:500 - 1:1000 IHC 1:50
- 1:100 IF 1:20 - 1:50 IP
1:20 - 1:50 FC 1:20 - 1:50

Source:

Rabbit

Isotype:

IgG

Purification:

Affinity purification

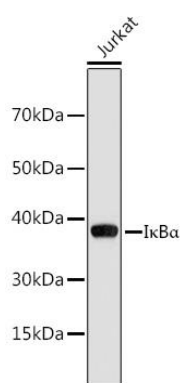
Immunogen:

Recombinant protein of human IκBAlpha

Storage:

Store at -20°C. Avoid freeze / thaw cycles. Buffer: PBS with 0.02% sodium azide, 50% glycerol, pH7.3.

Product Images



Western blot analysis of extracts of Jurkat cells, using IκBα antibody (CAB2457). Secondary antibody: HRP Goat Anti-Rabbit IgG (H+L) (CABS014) at 1:10000 dilution. Lysates/proteins: 25ug per lane. Blocking buffer: 3% nonfat dry milk in TBST.