

# SOX9 Rabbit Polyclonal Antibody



CAB2479

## Product Information

### Size:

20uL, 50uL, 100uL, 200uL

### Observed MW:

70kDa

### Calculated MW:

56kDa

### Applications:

WB IHC

### Reactivity:

Human, Mouse, Rat

## Protein Background

The protein encoded by this gene recognizes the sequence CCTTGAG along with other members of the HMG-box class DNA-binding proteins. It acts during chondrocyte differentiation and, with steroidogenic factor 1, regulates transcription of the anti-Muellerian hormone (AMH) gene. Deficiencies lead to the skeletal malformation syndrome campomelic dysplasia, frequently with sex reversal.

## Immunogen information

### Gene ID:

6662

### Uniprot

P48436

### Synonyms:

CMD1; CMPD1; SRA1; SRXX2; SRXY10; SOX9; SRY-box 9

## Antibody Information

### Recommended dilutions:

WB 1:500 - 1:2000 IHC 1:50 - 1:200

### Source:

Rabbit

### Isotype:

IgG

### Purification:

Affinity purification

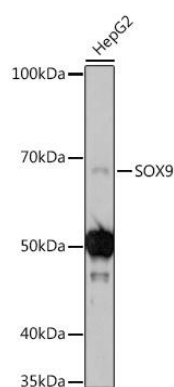
### Immunogen:

A synthetic peptide corresponding to a sequence within amino acids 100-200 of human SOX9 (NP\_000337.1).

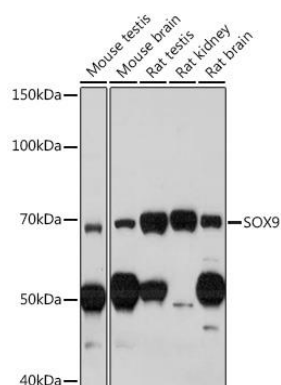
### Storage:

Store at -20°C. Avoid freeze / thaw cycles. Buffer: PBS with 0.02% sodium azide, 50% glycerol, pH7.3.

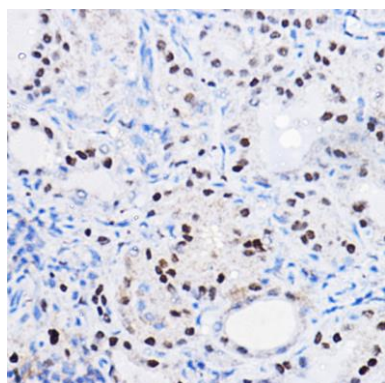
## Product Images



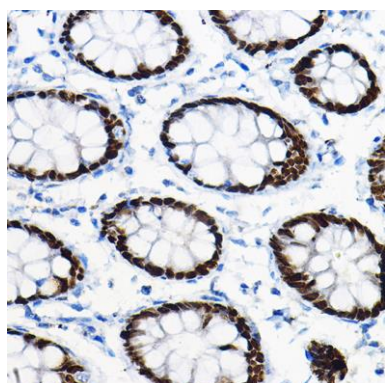
Western blot analysis of extracts of HepG2 cells, using SOX9 antibody (CAB2479) at 1:1000 dilution. Secondary antibody: HRP Goat Anti-Rabbit IgG (H+L) (CABS014) at 1:10000 dilution. Lysates/proteins: 25ug per lane. Blocking buffer: 3% nonfat dry milk in TBST. Detection: ECL Basic Kit (CABM00020). Exposure time: 120s.



Western blot analysis of extracts of various cell lines, using SOX9 antibody (CAB2479) at 1:1000 dilution. Secondary antibody: HRP Goat Anti-Rabbit IgG (H+L) (CABS014) at 1:10000 dilution. Lysates/proteins: 25ug per lane. Blocking buffer: 3% nonfat dry milk in TBST. Detection: ECL Basic Kit (CABM00020). Exposure time: 120s.



Immunohistochemistry of paraffin-embedded human thyroid cancer using SOX9 Rabbit pAb (CAB2479) at dilution of 1:100 (40x lens).



Immunohistochemistry of paraffin-embedded human colon using SOX9 Rabbit pAb (CAB2479) at dilution of 1:100 (40x lens).