

P2RY6 Rabbit Polyclonal Antibody



CAB2485

Product Information

Size:

20uL, 50uL, 100uL, 200uL

Observed MW:

42kDa

Calculated MW:

36kDa

Applications:

WB

Reactivity:

Human, Mouse

Antibody Information

Recommended dilutions:

WB 1:500 - 1:1000

Source:

Rabbit

Isotype:

IgG

Purification:

Affinity purification

Protein Background

The product of this gene belongs to the family of P2 receptors, which is activated by extracellular nucleotides and subdivided into P2X ligand-gated ion channels and P2Y G-protein coupled receptors. This family has several receptor subtypes with different pharmacological selectivity, which overlaps in some cases, for various adenosine and uridine nucleotides. This receptor, which is a G-protein coupled receptor, is responsive to UDP, partially responsive to UTP and ADP, and not responsive to ATP. It is proposed that this receptor mediates inflammatory responses. Alternative splicing results in multiple transcript variants that encode different protein isoforms.

Immunogen information

Gene ID:

5031

Uniprot

Q15077

Synonyms:

P2RY6; P2Y6

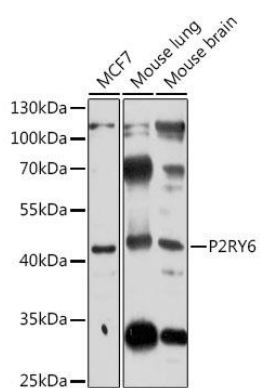
Immunogen:

Recombinant protein of human P2RY6

Storage:

Store at -20°C. Avoid freeze / thaw cycles. Buffer: PBS with 0.02% sodium azide, 50% glycerol, pH7.3.

Product Images



Western blot analysis of extracts of various cell lines, using P2RY6 antibody (CAB2485) at 1:1000 dilution. Secondary antibody: HRP Goat Anti-Rabbit IgG (H+L) (CABS014) at 1:10000 dilution. Lysates/proteins: 25ug per lane. Blocking buffer: 3% nonfat dry milk in TBST. Detection: ECL Basic Kit (CABM00020). Exposure time: 60s.