

GTF2F1 Rabbit Polyclonal Antibody



CAB2489

Product Information

Size:

20uL, 50uL, 100uL, 200uL

Observed MW:

74kDa

Calculated MW:

58kDa

Applications:

WB IHC IF

Reactivity:

Human, Rat

Antibody Information

Recommended dilutions:

WB 1:500 - 1:2000 IHC 1:50
- 1:200 IF 1:50 - 1:100

Source:

Rabbit

Isotype:

IgG

Purification:

Affinity purification

Protein Background

Immunogen information

Gene ID:

2962

Uniprot

P35269

Synonyms:

BTF4; RAP74; TF2F1; TFIIIF; GTF2F1

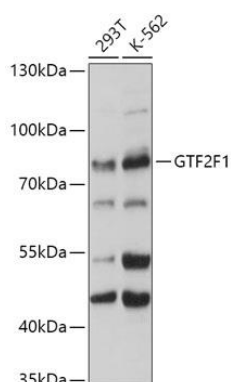
Immunogen:

Recombinant fusion protein containing a sequence corresponding to amino acids 340-505 of human GTF2F1 (NP_002087.2).

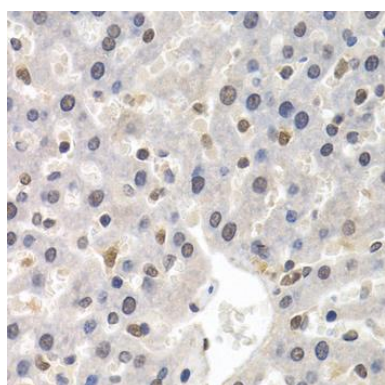
Storage:

Store at -20°C. Avoid freeze / thaw cycles. Buffer: PBS with 0.02% sodium azide, 50% glycerol, pH7.3.

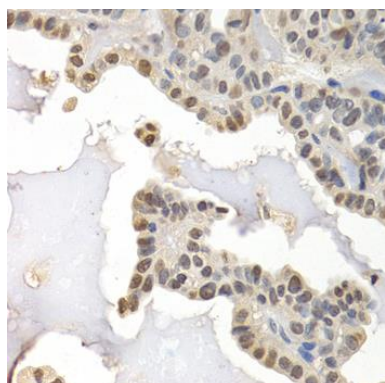
Product Images



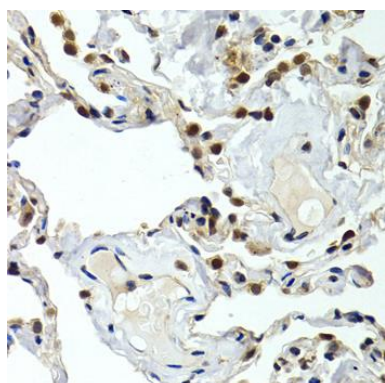
Western blot analysis of extracts of various cell lines, using GTF2F1 antibody (CAB2489) at 1:500 dilution. Secondary antibody: HRP Goat Anti-Rabbit IgG (H+L) (CABS014) at 1:10000 dilution. Lysates/proteins: 25ug per lane. Blocking buffer: 3% nonfat dry milk in TBST. Detection: ECL Basic Kit (CABM00020). Exposure time: 1s.



Immunohistochemistry of paraffin-embedded rat liver using GTF2F1 antibody (CAB2489) at dilution of 1:200 (40x lens).



Immunohistochemistry of paraffin-embedded human thyroid cancer using GTF2F1 antibody (CAB2489) at dilution of 1:200 (40x lens).



Immunohistochemistry of paraffin-embedded human normal lung using GTF2F1 antibody (CAB2489) at dilution of 1:200 (40x lens).