

EPB41 Rabbit Polyclonal Antibody



CAB2490

Product Information

Size:

20uL, 50uL, 100uL, 200uL

Observed MW:

90-97kDa

Calculated MW:

63kDa/66kDa/71kDa/81kDa/
86kDa/93kDa/97kDa

Applications:

WB IHC IF

Reactivity:

Human, Mouse

Protein Background

The protein encoded by this gene, together with spectrin and actin, constitute the red cell membrane cytoskeletal network. This complex plays a critical role in erythrocyte shape and deformability. Mutations in this gene are associated with type 1 elliptocytosis (EL1). Alternatively spliced transcript variants encoding different isoforms have been described for this gene.

Immunogen information

Gene ID:

2035

Uniprot

P11171

Synonyms:

EPB41; 4.1R; EL1; HE

Antibody Information

Recommended dilutions:

WB 1:500 - 1:2000 IHC 1:50
- 1:200 IF 1:50 - 1:200

Source:

Rabbit

Isotype:

IgG

Purification:

Affinity purification

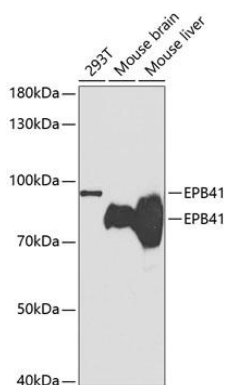
Immunogen:

Recombinant fusion protein containing a sequence corresponding to amino acids 210-500 of human EPB41 (NP_001159478.1).

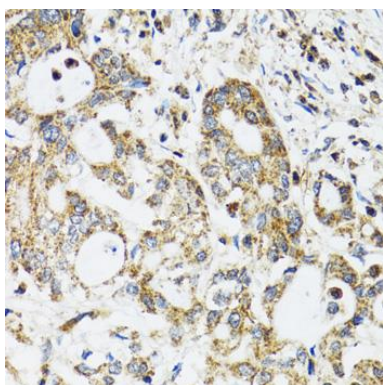
Storage:

Store at -20°C. Avoid freeze / thaw cycles. Buffer: PBS with 0.02% sodium azide, 50% glycerol, pH7.3.

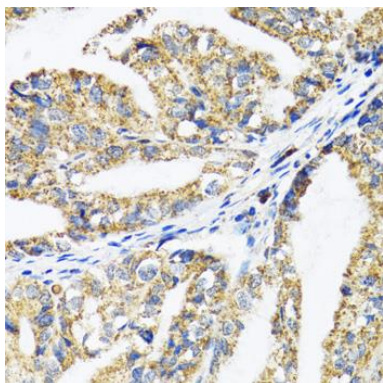
Product Images



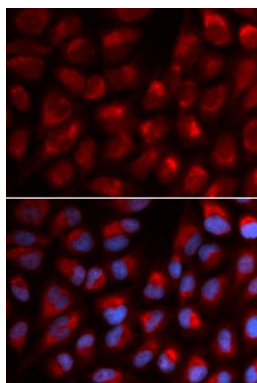
Western blot analysis of extracts of various cell lines, using EPB41 antibody (CAB2490) at 1:1000 dilution. Secondary antibody: HRP Goat Anti-Rabbit IgG (H+L) (CABS014) at 1:10000 dilution. Lysates/proteins: 25ug per lane. Blocking buffer: 3% nonfat dry milk in TBST.



Immunohistochemistry of paraffin-embedded human colon carcinoma using EPB41 antibody (CAB2490) at dilution of 1:100 (40x lens).



Immunohistochemistry of paraffin-embedded human gastric cancer using EPB41 antibody (CAB2490) at dilution of 1:100 (40x lens).



Immunofluorescence analysis of U2OS cells using EPB41 antibody (CAB2490). Blue: DAPI for nuclear staining.