

POLR2L Rabbit Polyclonal Antibody



CAB2491

Product Information

Size:

20uL, 50uL, 100uL, 200uL

Observed MW:

Calculated MW:

7kDa

Applications:

IHC

Reactivity:

Mouse, Rat

Antibody Information

Recommended dilutions:

IHC 1:50 - 1:200

Source:

Rabbit

Isotype:

IgG

Purification:

Affinity purification

Protein Background

This gene encodes a subunit of RNA polymerase II, the polymerase responsible for synthesizing messenger RNA in eukaryotes. The product of this gene contains four conserved cysteines characteristic of an atypical zinc-binding domain. Like its counterpart in yeast, this subunit may be shared by the other two DNA-directed RNA polymerases.

Immunogen information

Gene ID:

5441

Uniprot

P62875

Synonyms:

POLR2L; RBP10; RPABC5; RPB10; RPB10beta; RPB7.6; hRPB7.6

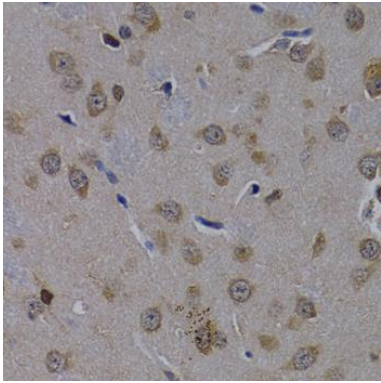
Immunogen:

Recombinant fusion protein containing a sequence corresponding to amino acids 1-67 of human POLR2L (NP_066951.1).

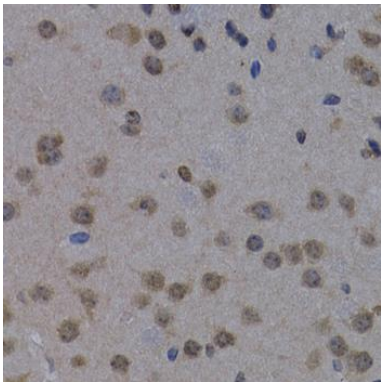
Storage:

Store at -20°C. Avoid freeze / thaw cycles. Buffer: PBS with 0.02% sodium azide, 50% glycerol, pH7.3.

Product Images



Immunohistochemistry of paraffin-embedded rat brain using POLR2L antibody (CAB2491) at dilution of 1:200 (40x lens).



Immunohistochemistry of paraffin-embedded mouse brain using POLR2L antibody (CAB2491) at dilution of 1:200 (40x lens).