

# FOXM1 Rabbit Polyclonal Antibody



CAB2493

---

## Product Information

### Size:

20uL, 50uL, 100uL, 200uL

### Observed MW:

108kDa

### Calculated MW:

82kDa/84kDa/88kDa

### Applications:

WB

### Reactivity:

Human, Mouse, Rat

## Antibody Information

### Recommended dilutions:

WB 1:500 - 1:2000

### Source:

Rabbit

### Isotype:

IgG

### Purification:

Affinity purification

## Protein Background

The protein encoded by this gene is a transcriptional activator involved in cell proliferation. The encoded protein is phosphorylated in M phase and regulates the expression of several cell cycle genes, such as cyclin B1 and cyclin D1. Several transcript variants encoding different isoforms have been found for this gene.

## Immunogen information

### Gene ID:

2305

### Uniprot

Q08050

### Synonyms:

FKHL16; FOXM1B; HFH-11; HFH11; HNF-3; INS-1; MPHOSPH2; MPP-2; MPP2; PIG29; TRIDENT; FOXM1

### Immunogen:

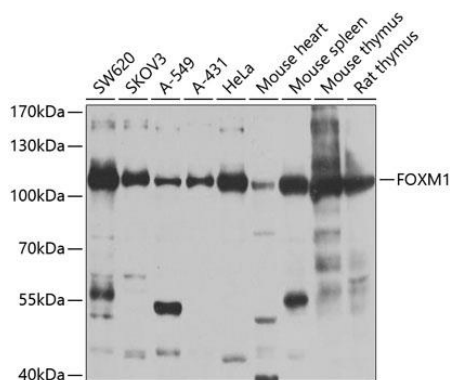
Recombinant fusion protein containing a sequence corresponding to amino acids 1-350 of human FOXM1 (NP\_973732.1).

### Storage:

Store at -20°C. Avoid freeze / thaw cycles. Buffer: PBS with 0.02% sodium azide, 50% glycerol, pH7.3.

## Product Images

---



Western blot analysis of extracts of various cell lines, using FOXM1 antibody (CAB2493) at 1:1000 dilution. Secondary antibody: HRP Goat Anti-Rabbit IgG (H+L) (CABS014) at 1:10000 dilution. Lysates/proteins: 25ug per lane. Blocking buffer: 3% nonfat dry milk in TBST. Detection: ECL Basic Kit (CABM00020). Exposure time: 90s.