

SIAH1 Rabbit Polyclonal Antibody



CAB2494

Product Information

Size:

20uL, 50uL, 100uL, 200uL

Observed MW:

31kDa

Calculated MW:

21kDa/31kDa/34kDa

Applications:

WB IHC IF

Reactivity:

Human, Mouse, Rat

Protein Background

This gene encodes a protein that is a member of the seven in absentia homolog (SIAH) family. The protein is an E3 ligase and is involved in ubiquitination and proteasome-mediated degradation of specific proteins. The activity of this ubiquitin ligase has been implicated in the development of certain forms of Parkinson's disease, the regulation of the cellular response to hypoxia and induction of apoptosis. Alternative splicing results in several additional transcript variants, some encoding different isoforms and others that have not been fully characterized.

Immunogen information

Gene ID:

6477

Uniprot

Q8IUQ4

Synonyms:

SIAH1; SIAH1A

Antibody Information

Recommended dilutions:

WB 1:500 - 1:2000 IHC 1:50
- 1:200 IF 1:50 - 1:200

Source:

Rabbit

Isotype:

IgG

Purification:

Affinity purification

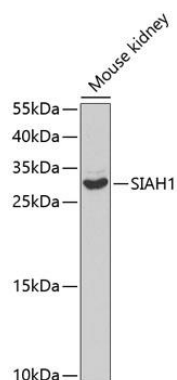
Immunogen:

Recombinant fusion protein containing a sequence corresponding to amino acids 1-313 of human SIAH1 (NP_001006611.1).

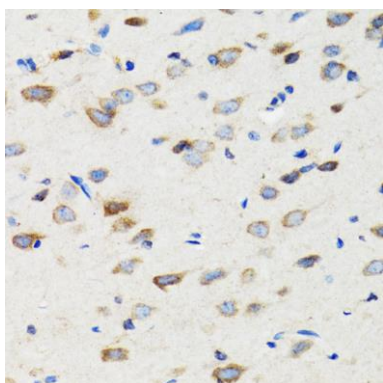
Storage:

Store at -20°C. Avoid freeze / thaw cycles. Buffer: PBS with 0.02% sodium azide, 50% glycerol, pH7.3.

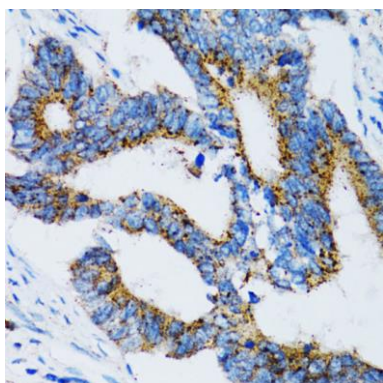
Product Images



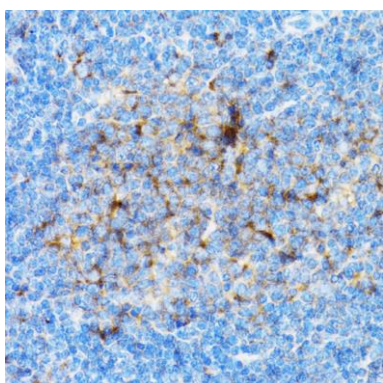
Western blot analysis of extracts of mouse kidney, using SIAH1 antibody (CAB2494) at 1:1000 dilution. Secondary antibody: HRP Goat Anti-Rabbit IgG (H+L) (CABS014) at 1:10000 dilution. Lysates/proteins: 25ug per lane. Blocking buffer: 3% nonfat dry milk in TBST.



Immunohistochemistry of paraffin-embedded rat brain using SIAH1 antibody (CAB2494) at dilution of 1:100 (40x lens).



Immunohistochemistry of paraffin-embedded human colon carcinoma using SIAH1 antibody (CAB2494) at dilution of 1:100 (40x lens).



Immunohistochemistry of paraffin-embedded mouse spleen using SIAH1 antibody (CAB2494) at dilution of 1:100 (40x lens).