

ILF3 Rabbit Polyclonal Antibody



CAB2496

Product Information

Size:

20uL, 50uL, 100uL, 200uL

Observed MW:

95, 120kDa

Calculated MW:

74kDa/75kDa/76kDa/82kDa/
95kDa

Applications:

WB IHC IF IP

Reactivity:

Human, Mouse, Rat

Antibody Information

Recommended dilutions:

WB 1:500 - 1:2000 IHC 1:50
- 1:200 IF 1:50 - 1:200 IP
1:50 - 1:200

Source:

Rabbit

Isotype:

IgG

Purification:

Affinity purification

Protein Background

This gene encodes a double-stranded RNA (dsRNA) binding protein that complexes with other proteins, dsRNAs, small noncoding RNAs, and mRNAs to regulate gene expression and stabilize mRNAs. This protein (NF90, ILF3) forms a heterodimer with a 45 kDa transcription factor (NF45, ILF2) required for T-cell expression of interleukin 2. This complex has been shown to affect the redistribution of nuclear mRNA to the cytoplasm. Knockdown of NF45 or NF90 protein retards cell growth, possibly by inhibition of mRNA stabilization. In contrast, an isoform (NF110) of this gene that is predominantly restricted to the nucleus has only minor effects on cell growth when its levels are reduced. Alternative splicing results in multiple transcript variants encoding distinct isoforms.

Immunogen information

Gene ID:

3609

Uniprot

Q12906

Synonyms:

ILF3; CBTF; DRBF; DRBP76; MMP4; MPHOSPH4; MPP4; NF-AT-90;
NF110; NF110b; NF90; NF90a; NF90b; NFAR; NFAR-1; NFAR2;
TCP110; TCP80

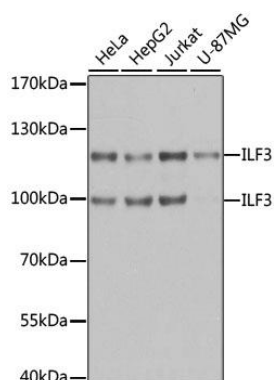
Immunogen:

Recombinant fusion protein containing a sequence corresponding to amino acids 1-270 of human ILF3 (NP_036350.2).

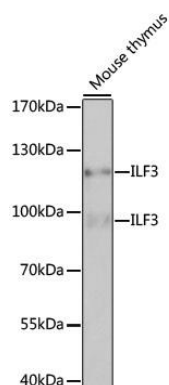
Storage:

Store at -20°C. Avoid freeze / thaw cycles. Buffer: PBS with 0.02% sodium azide, 50% glycerol, pH7.3.

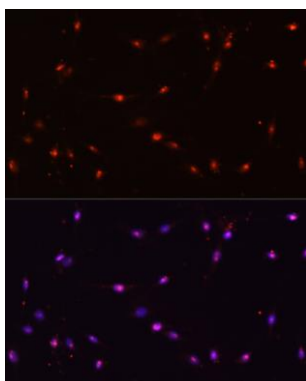
Product Images



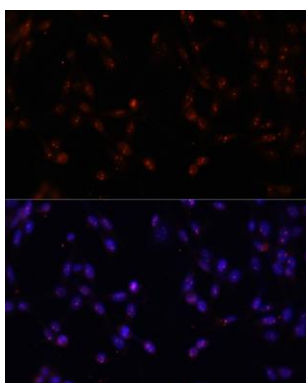
Western blot analysis of extracts of various cell lines, using ILF3 antibody (CAB2496) at 1:1000 dilution. Secondary antibody: HRP Goat Anti-Rabbit IgG (H+L) (CABS014) at 1:10000 dilution. Lysates/proteins: 25ug per lane. Blocking buffer: 3% nonfat dry milk in TBST. Detection: ECL Basic Kit (CABM00020). Exposure time: 1s.



Western blot analysis of extracts of mouse thymus, using ILF3 antibody (CAB2496) at 1:1000 dilution. Secondary antibody: HRP Goat Anti-Rabbit IgG (H+L) (CABS014) at 1:10000 dilution. Lysates/proteins: 25ug per lane. Blocking buffer: 3% nonfat dry milk in TBST. Detection: ECL Basic Kit (CABM00020). Exposure time: 5s.



Immunofluorescence analysis of C6 cells using ILF3 antibody (CAB2496) at dilution of 1:100. Blue: DAPI for nuclear staining.



Immunofluorescence analysis of NIH-3T3 cells using ILF3 antibody (CAB2496) at dilution of 1:100. Blue: DAPI for nuclear staining.