

NUP62 Rabbit Polyclonal Antibody



CAB2499

Product Information

Size:

20uL, 50uL, 100uL, 200uL

Observed MW:

62kDa

Calculated MW:

53kDa

Applications:

WB IHC IF

Reactivity:

Human

Protein Background

The nuclear pore complex is a massive structure that extends across the nuclear envelope, forming a gateway that regulates the flow of macromolecules between the nucleus and the cytoplasm. Nucleoporins are the main components of the nuclear pore complex in eukaryotic cells. The protein encoded by this gene is a member of the FG-repeat containing nucleoporins and is localized to the nuclear pore central plug. This protein associates with the importin alpha/beta complex which is involved in the import of proteins containing nuclear localization signals. Multiple transcript variants of this gene encode a single protein isoform.

Immunogen information

Gene ID:

23636

Uniprot

P37198

Synonyms:

NUP62; IBSN; SNDI; p62

Antibody Information

Recommended dilutions:

WB 1:500 - 1:2000 IHC 1:50
- 1:200 IF 1:10 - 1:100

Source:

Rabbit

Isotype:

IgG

Purification:

Affinity purification

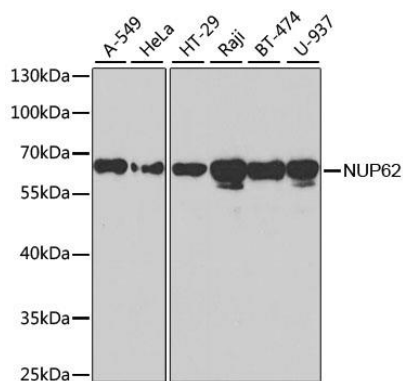
Immunogen:

Recombinant fusion protein containing a sequence corresponding to amino acids 403-522 of human NUP62 (NP_036478.2).

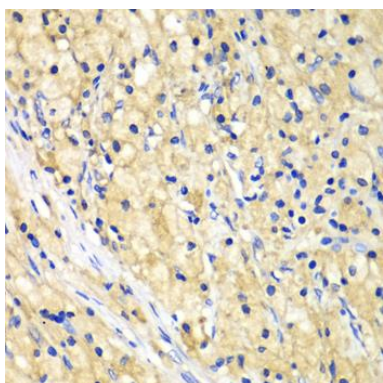
Storage:

Store at -20°C. Avoid freeze / thaw cycles. Buffer: PBS with 0.02% sodium azide, 50% glycerol, pH7.3.

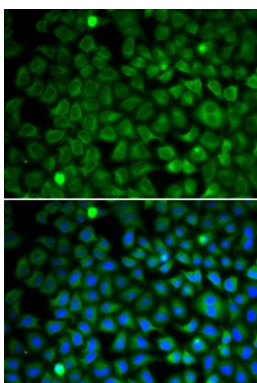
Product Images



Western blot analysis of extracts of various cell lines, using NUP62 antibody (CAB2499) at 1:1000 dilution. Secondary antibody: HRP Goat Anti-Rabbit IgG (H+L) (CABS014) at 1:10000 dilution. Lysates/proteins: 25ug per lane. Blocking buffer: 3% nonfat dry milk in TBST. Detection: ECL Basic Kit (CABM00020).



Immunohistochemistry of paraffin-embedded human lung cancer using NUP62 antibody (CAB2499) at dilution of 1:100 (40x lens).



Immunofluorescence analysis of U2OS cells using NUP62 antibody (CAB2499). Blue: DAPI for nuclear staining.