

LYZ Rabbit Polyclonal Antibody



CAB2503

Product Information

Size:

20uL, 50uL, 100uL, 200uL

Observed MW:

16kDa

Calculated MW:

16kDa

Applications:

WB IHC

Reactivity:

Human

Antibody Information

Recommended dilutions:

WB 1:500 - 1:2000 IHC 1:50
- 1:100

Source:

Rabbit

Isotype:

IgG

Purification:

Affinity purification

Protein Background

This gene encodes human lysozyme, whose natural substrate is the bacterial cell wall peptidoglycan (cleaving the beta[1-4]glycosidic linkages between N-acetylmuramic acid and N-acetylglucosamine). Lysozyme is one of the antimicrobial agents found in human milk, and is also present in spleen, lung, kidney, white blood cells, plasma, saliva, and tears. The protein has antibacterial activity against a number of bacterial species. Missense mutations in this gene have been identified in heritable renal amyloidosis.

Immunogen information

Gene ID:

4069

Uniprot

P61626

Synonyms:

LYZ; LYZF1; LZM; lysozyme

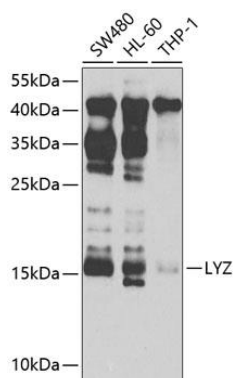
Immunogen:

Recombinant fusion protein containing a sequence corresponding to amino acids 19-148 of human LYZ (NP_000230.1).

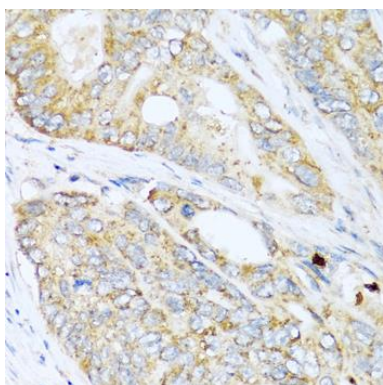
Storage:

Store at -20°C. Avoid freeze / thaw cycles. Buffer: PBS with 0.02% sodium azide, 50% glycerol, pH7.3.

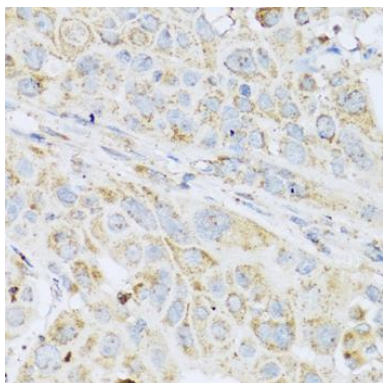
Product Images



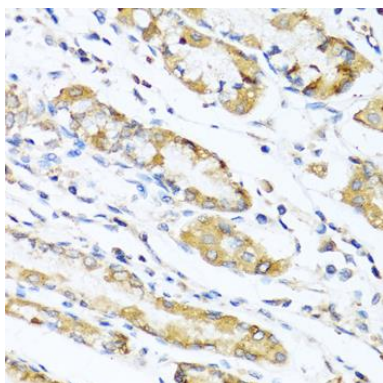
Western blot analysis of extracts of various cell lines, using LYZ Antibody (CAB2503) at 1:1000 dilution. Secondary antibody: HRP Goat Anti-Rabbit IgG (H+L) (CABS014) at 1:10000 dilution. Lysates/proteins: 25ug per lane. Blocking buffer: 3% nonfat dry milk in TBST. Detection: ECL Enhanced Kit (CABM00021). Exposure time: 10s.



Immunohistochemistry of paraffin-embedded human colon carcinoma using LYZ antibody (CAB2503) at dilution of 1:100 (40x lens).



Immunohistochemistry of paraffin-embedded human esophageal cancer using LYZ antibody (CAB2503) at dilution of 1:100 (40x lens).



Immunohistochemistry of paraffin-embedded human stomach using LYZ antibody (CAB2503) at dilution of 1:100 (40x lens).