

# PSMC4 Rabbit Polyclonal Antibody



CAB2505

## Product Information

### Size:

20uL, 50uL, 100uL, 200uL

### Observed MW:

47kDa

### Calculated MW:

43kDa/47kDa

### Applications:

WB IF

### Reactivity:

Human, Mouse

## Antibody Information

### Recommended dilutions:

WB 1:500 - 1:2000 IF 1:50 - 1:200

### Source:

Rabbit

### Isotype:

IgG

### Purification:

Affinity purification

## Protein Background

The 26S proteasome is a multicatalytic proteinase complex with a highly ordered structure composed of 2 complexes, a 20S core and a 19S regulator. The 20S core is composed of 4 rings of 28 non-identical subunits; 2 rings are composed of 7 alpha subunits and 2 rings are composed of 7 beta subunits. The 19S regulator is composed of a base, which contains 6 ATPase subunits and 2 non-ATPase subunits, and a lid, which contains up to 10 non-ATPase subunits. Proteasomes are distributed throughout eukaryotic cells at a high concentration and cleave peptides in an ATP/ubiquitin-dependent process in a non-lysosomal pathway. This gene encodes a member of the triple-A family of ATPases that is a component of the 19S regulatory subunit and plays a role in 26S proteasome assembly. The encoded protein interacts with gankyrin, a liver oncoprotein, and may also play a role in Parkinson's disease through interactions with synphilin-1. Alternatively spliced transcript variants encoding multiple isoforms have been observed for this gene.

## Immunogen information

### Gene ID:

5704

### Uniprot

P43686

### Synonyms:

PSMC4; MIP224; RPT3; S6; TBP-7; TBP7; ATPase 4

### Immunogen:

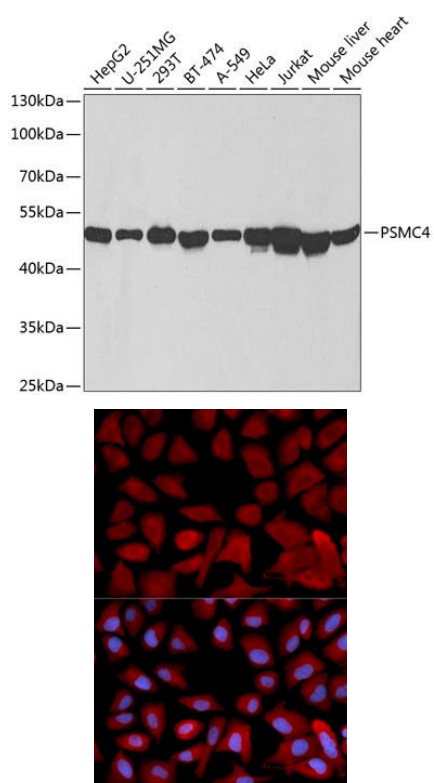
Recombinant fusion protein containing a sequence corresponding to amino acids 1-165 of human PSMC4 (NP\_006494.1).

### Storage:

Store at -20°C. Avoid freeze / thaw cycles. Buffer: PBS with 0.02% sodium azide, 50% glycerol, pH7.3.

## Product Images

---



Western blot analysis of extracts of various cell lines, using PSMC4 antibody (CAB2505) at 1:1000 dilution. Secondary antibody: HRP Goat Anti-Rabbit IgG (H+L) (CABS014) at 1:10000 dilution. Lysates/proteins: 25ug per lane. Blocking buffer: 3% nonfat dry milk in TBST. Detection: ECL Basic Kit (CABM00020). Exposure time: 30s.

Immunofluorescence analysis of U2OS cells using PSMC4 antibody (CAB2505). Blue: DAPI for nuclear staining.