

EEF1D Rabbit Polyclonal Antibody



CAB2509

Product Information

Size:

20uL, 50uL, 100uL, 200uL

Observed MW:

38kDa

Calculated MW:

28kDa/29kDa/31kDa/71kDa

Applications:

WB IHC IF IP

Reactivity:

Human, Mouse, Rat

Antibody Information

Recommended dilutions:

WB 1:500 - 1:2000 IHC 1:50
- 1:200 IF 1:50 - 1:200 IP
1:50 - 1:200

Source:

Rabbit

Isotype:

IgG

Purification:

Affinity purification

Protein Background

This gene encodes a subunit of the elongation factor-1 complex, which is responsible for the enzymatic delivery of aminoacyl tRNAs to the ribosome. This subunit, delta, functions as guanine nucleotide exchange factor. It is reported that following HIV-1 infection, this subunit interacts with HIV-1 Tat. This interaction results in repression of translation of host cell proteins and enhanced translation of viral proteins. Several alternatively spliced transcript variants encoding multiple isoforms have been found for this gene. Related pseudogenes have been defined on chromosomes 1, 6, 7, 9, 11, 13, 17, 19.

Immunogen information

Gene ID:

1936

Uniprot

P29692

Synonyms:

EEF1D; EF-1D; EF1D; FP1047

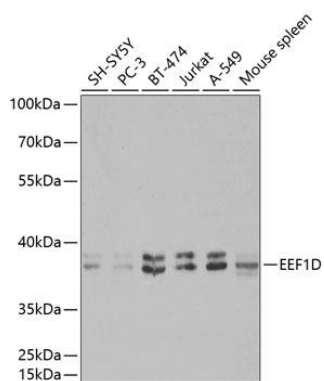
Immunogen:

Recombinant fusion protein containing a sequence corresponding to amino acids 1-160 of human EEF1D (NP_001123529.1).

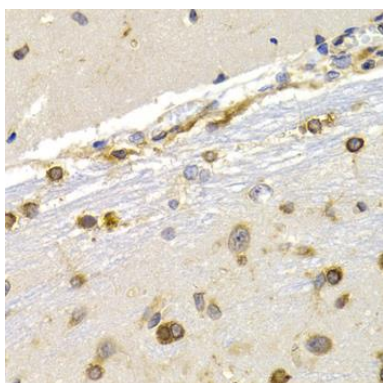
Storage:

Store at -20°C. Avoid freeze / thaw cycles. Buffer: PBS with 0.02% sodium azide, 50% glycerol, pH7.3.

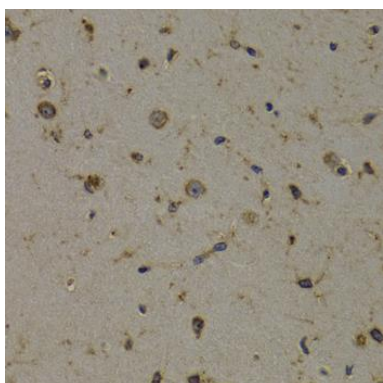
Product Images



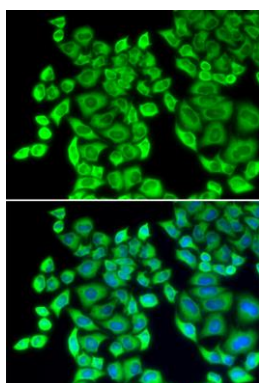
Western blot analysis of extracts of various cell lines, using EEF1D antibody (CAB2509) at 1:1000 dilution. Secondary antibody: HRP Goat Anti-Rabbit IgG (H+L) (CABS014) at 1:10000 dilution. Lysates/proteins: 25ug per lane. Blocking buffer: 3% nonfat dry milk in TBST.



Immunohistochemistry of paraffin-embedded rat brain using EEF1D antibody (CAB2509) at dilution of 1:200 (40x lens).



Immunohistochemistry of paraffin-embedded mouse brain using EEF1D antibody (CAB2509) at dilution of 1:200 (40x lens).



Immunofluorescence analysis of U2OS cells using EEF1D antibody (CAB2509). Blue: DAPI for nuclear staining.