

TCOF1 Rabbit Polyclonal Antibody



CAB2512

Product Information

Size:

20uL, 50uL, 100uL, 200uL

Observed MW:

152kDa

Calculated MW:

96kDa/144kDa/148kDa/152kDa/155kDa

Applications:

WB

Reactivity:

Human

Protein Background

This gene encodes a nucleolar protein with a LIS1 homology domain. The protein is involved in ribosomal DNA gene transcription through its interaction with upstream binding factor (UBF). Mutations in this gene have been associated with Treacher Collins syndrome, a disorder which includes abnormal craniofacial development. Multiple transcript variants encoding different isoforms have been found for this gene.

Immunogen information

Gene ID:

6949

Uniprot

Q13428

Synonyms:

TCOF1; MFD1; TCS; TCS1; treacle

Antibody Information

Recommended dilutions:

WB 1:500 - 1:2000

Source:

Rabbit

Isotype:

IgG

Purification:

Affinity purification

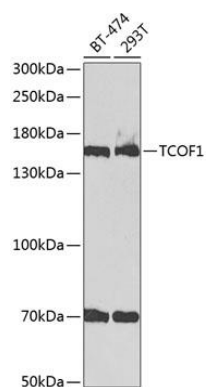
Immunogen:

Recombinant fusion protein containing a sequence corresponding to amino acids 659-958 of human TCOF1 (NP_001008657.1).

Storage:

Store at -20°C. Avoid freeze / thaw cycles. Buffer: PBS with 0.02% sodium azide, 50% glycerol, pH7.3.

Product Images



Western blot analysis of extracts of various cell lines, using TCOF1 antibody (CAB2512) at 1:1000 dilution. Secondary antibody: HRP Goat Anti-Rabbit IgG (H+L) (CABS014) at 1:10000 dilution. Lysates/proteins: 25ug per lane. Blocking buffer: 3% nonfat dry milk in TBST.