

HSPB8 Rabbit Polyclonal Antibody



CAB2514

Product Information

Size:

20uL, 50uL, 100uL, 200uL

Observed MW:

22KDa

Calculated MW:

21kDa

Applications:

WB IHC IF

Reactivity:

Human, Mouse, Rat

Protein Background

The protein encoded by this gene belongs to the superfamily of small heat-shock proteins containing a conservative alpha-crystallin domain at the C-terminal part of the molecule. The expression of this gene is induced by estrogen in estrogen receptor-positive breast cancer cells, and this protein also functions as a chaperone in association with Bag3, a stimulator of macroautophagy. Thus, this gene appears to be involved in regulation of cell proliferation, apoptosis, and carcinogenesis, and mutations in this gene have been associated with different neuromuscular diseases, including Charcot-Marie-Tooth disease.

Immunogen information

Gene ID:

26353

Uniprot

Q9UJY1

Synonyms:

HSPB8; CMT2L; DHMN2; E2IG1; H11; HMN2; HMN2A; HSP22

Antibody Information

Recommended dilutions:

WB 1:500 - 1:2000 IHC 1:50
- 1:200 IF 1:50 - 1:100

Source:

Rabbit

Isotype:

IgG

Purification:

Affinity purification

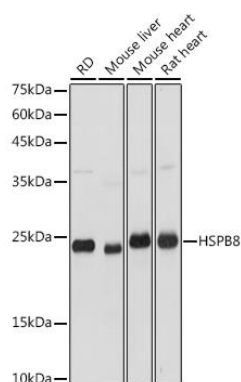
Immunogen:

Recombinant fusion protein containing a sequence corresponding to amino acids 1-196 of human HSPB8 (NP_055180.1).

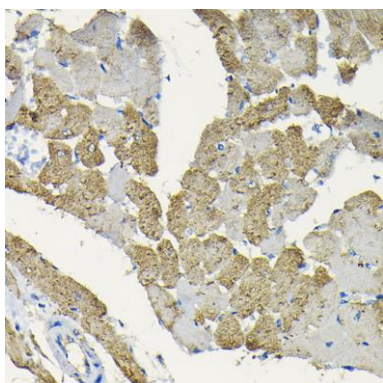
Storage:

Store at -20°C. Avoid freeze / thaw cycles. Buffer: PBS with 0.02% sodium azide, 50% glycerol, pH7.3.

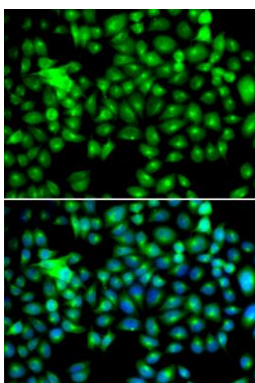
Product Images



Western blot analysis of extracts of various cell lines, using HSPB8 antibody (CAB2514) at 1:3000 dilution. Secondary antibody: HRP Goat Anti-Rabbit IgG (H+L) (CABS014) at 1:10000 dilution. Lysates/proteins: 25ug per lane. Blocking buffer: 3% nonfat dry milk in TBST. Detection: ECL Basic Kit (CABM00020). Exposure time: 1s.



Immunohistochemistry of paraffin-embedded rat heart using HSPB8 Rabbit pAb (CAB2514) at dilution of 1:100 (40x lens).



Immunofluorescence analysis of HeLa cells using HSPB8 antibody (CAB2514). Blue: DAPI for nuclear staining.