

ATP2C1 Rabbit Polyclonal Antibody



CAB2515

Product Information

Size:

20uL, 50uL, 100uL, 200uL

Observed MW:

125kDa

Calculated MW:

96- 107kDa

Applications:

WB IHC IF

Reactivity:

Human, Mouse, Rat

Protein Background

The protein encoded by this gene belongs to the family of P-type cation transport ATPases. This magnesium-dependent enzyme catalyzes the hydrolysis of ATP coupled with the transport of calcium ions. Defects in this gene cause Hailey-Hailey disease, an autosomal dominant disorder. Alternatively spliced transcript variants encoding different isoforms have been identified.

Immunogen information

Gene ID:

27032

Uniprot

P98194

Synonyms:

ATP2C1; ATP2C1A; BCPM; HDD; PMR1; SPCA1; hSPCA1

Antibody Information

Recommended dilutions:

WB 1:500 - 1:2000 IHC 1:50
- 1:200 IF 1:50 - 1:200

Source:

Rabbit

Isotype:

IgG

Purification:

Affinity purification

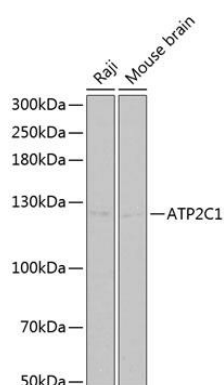
Immunogen:

Recombinant fusion protein containing a sequence corresponding to amino acids 400-660 of human ATP2C1 (NP_001186114.1).

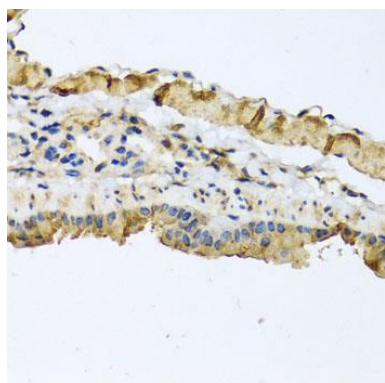
Storage:

Store at -20°C. Avoid freeze / thaw cycles. Buffer: PBS with 0.02% sodium azide, 50% glycerol, pH7.3.

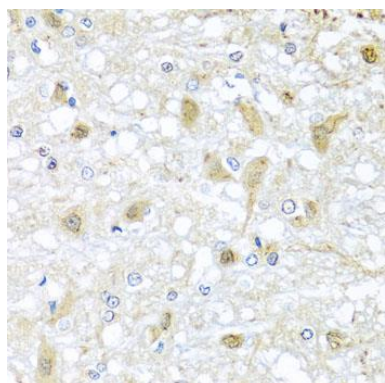
Product Images



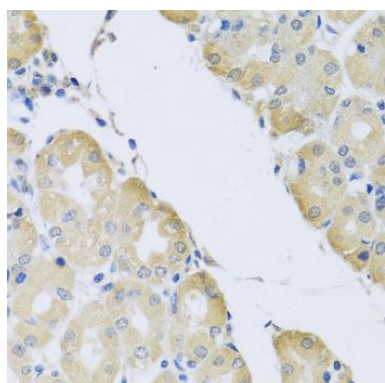
Western blot analysis of extracts of various cell lines, using ATP2C1 Antibody (CAB2515) at 1:1000 dilution. Secondary antibody: HRP Goat Anti-Rabbit IgG (H+L) (CABS014) at 1:10000 dilution. Lysates/proteins: 25ug per lane. Blocking buffer: 3% nonfat dry milk in TBST.



Immunohistochemistry of paraffin-embedded mouse lung using ATP2C1 antibody (CAB2515) at dilution of 1:100 (40x lens).



Immunohistochemistry of paraffin-embedded rat brain using ATP2C1 antibody (CAB2515) at dilution of 1:100 (40x lens).



Immunohistochemistry of paraffin-embedded human stomach using ATP2C1 antibody (CAB2515) at dilution of 1:100 (40x lens).