

# TIM-3/HAVCR2 Rabbit Polyclonal Antibody



CAB2516

## Product Information

### Size:

20uL, 50uL, 100uL, 200uL

### Observed MW:

45-70kDa

### Calculated MW:

16kDa/33kDa

### Applications:

WB IHC

### Reactivity:

Human, Mouse, Rat

## Antibody Information

### Recommended dilutions:

WB 1:500 - 1:1000 IHC 1:50  
- 1:200

### Source:

Rabbit

### Isotype:

IgG

### Purification:

Affinity purification

## Protein Background

The protein encoded by this gene belongs to the immunoglobulin superfamily, and TIM family of proteins. CD4-positive T helper lymphocytes can be divided into types 1 (Th1) and 2 (Th2) on the basis of their cytokine secretion patterns. Th1 cells are involved in cell-mediated immunity to intracellular pathogens and delayed-type hypersensitivity reactions, whereas, Th2 cells are involved in the control of extracellular helminthic infections and the promotion of atopic and allergic diseases. This protein is a Th1-specific cell surface protein that regulates macrophage activation, and inhibits Th1-mediated auto- and alloimmune responses, and promotes immunological tolerance.

## Immunogen information

### Gene ID:

84868

### Uniprot

Q8TDQ0

### Synonyms:

HAVCR2; CD366; HAVcr-2; KIM-3; TIM3; TIMD-3; TIMD3; Tim-3

### Immunogen:

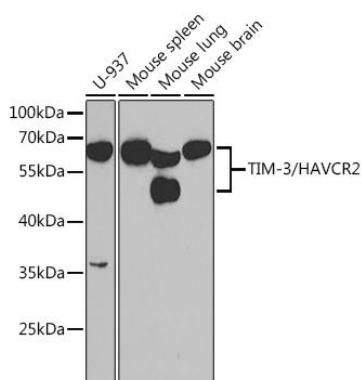
Recombinant fusion protein containing a sequence corresponding to amino acids 22-202 of human TIM-3/HAVCR2 (NP\_116171.3).

### Storage:

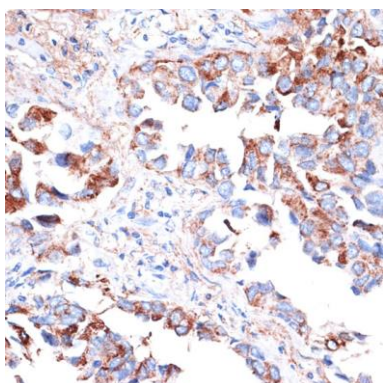
Store at -20°C. Avoid freeze / thaw cycles. Buffer: PBS with 0.02% sodium azide, 50% glycerol, pH7.3.

## Product Images

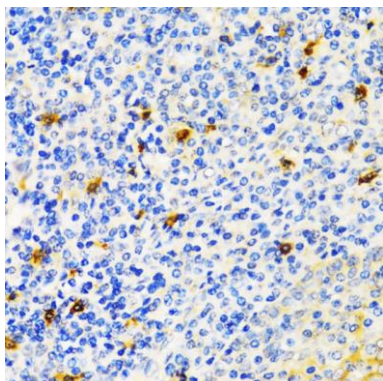
---



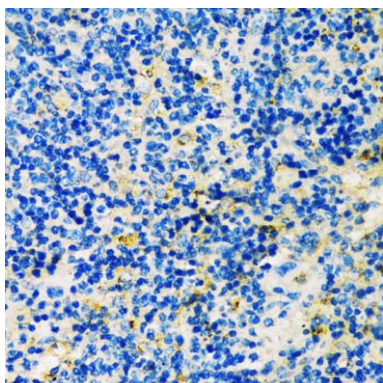
Western blot analysis of extracts of various cell lines, using TIM-3/HAVCR2 antibody (CAB2516) at 1:1000 dilution. Secondary antibody: HRP Goat Anti-Rabbit IgG (H+L) (CABS014) at 1:10000 dilution. Lysates/proteins: 25ug per lane. Blocking buffer: 3% nonfat dry milk in TBST. Detection: ECL Enhanced Kit (CABM00021). Exposure time: 5s.



Immunohistochemistry of paraffin-embedded human lung cancer using TIM-3/HAVCR2 antibody (CAB2516) at dilution of 1:200 (40x lens).



Immunohistochemistry of paraffin-embedded human tonsil using TIM-3/HAVCR2 antibody (CAB2516) at dilution of 1:200 (40x lens).



Immunohistochemistry of paraffin-embedded mouse spleen using TIM-3/HAVCR2 antibody (CAB2516) at dilution of 1:200 (40x lens).