

NEDD9 Rabbit Polyclonal Antibody



CAB2521

Product Information

Size:

20uL, 50uL, 100uL, 200uL

Observed MW:

115kDa

Calculated MW:

19kDa/92kDa

Applications:

WB IHC IF

Reactivity:

Human, Rat

Protein Background

The protein encoded by this gene is a member of the CRK-associated substrates family. Members of this family are adhesion docking molecules that mediate protein-protein interactions for signal transduction pathways. This protein is a focal adhesion protein that acts as a scaffold to regulate signaling complexes important in cell attachment, migration and invasion as well as apoptosis and the cell cycle. This protein has also been reported to have a role in cancer metastasis. Alternative splicing results in multiple transcript variants.

Immunogen information

Gene ID:

4739

Uniprot

Q14511

Synonyms:

NEDD9; CAS-L; CAS2; CASL; CASS2; HEF1

Antibody Information

Recommended dilutions:

WB 1:500 - 1:2000 IHC 1:50
- 1:200 IF 1:50 - 1:200

Source:

Rabbit

Isotype:

IgG

Purification:

Affinity purification

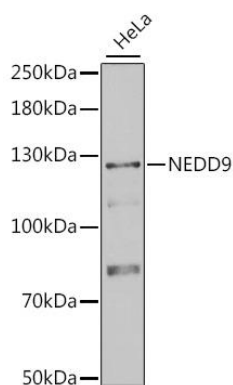
Immunogen:

Recombinant fusion protein containing a sequence corresponding to amino acids 60-174 of human NEDD9 (NP_892011.2).

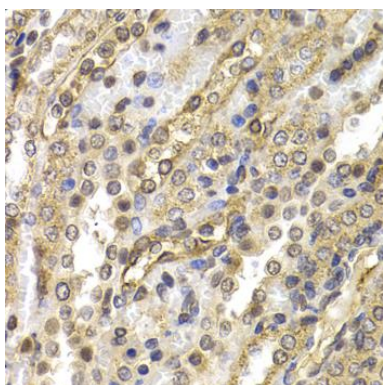
Storage:

Store at -20°C. Avoid freeze / thaw cycles. Buffer: PBS with 0.02% sodium azide, 50% glycerol, pH7.3.

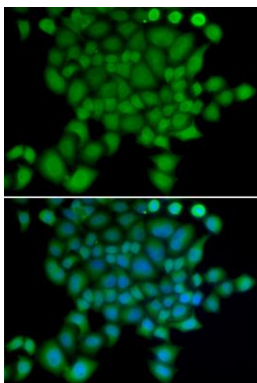
Product Images



Western blot analysis of extracts of HeLa cells, using NEDD9 antibody (CAB2521) at 1:1000 dilution. Secondary antibody: HRP Goat Anti-Rabbit IgG (H+L) (CABS014) at 1:10000 dilution. Lysates/proteins: 25ug per lane. Blocking buffer: 3% nonfat dry milk in TBST. Detection: ECL Basic Kit (CABM00020). Exposure time: 60s.



Immunohistochemistry of paraffin-embedded rat kidney using NEDD9 antibody (CAB2521) at dilution of 1:200 (40x lens).



Immunofluorescence analysis of U2OS cells using NEDD9 antibody (CAB2521). Blue: DAPI for nuclear staining.