

# DKK3 Rabbit Polyclonal Antibody



CAB2527

## Product Information

### Size:

20uL, 50uL, 100uL, 200uL

### Observed MW:

38kDa

### Calculated MW:

38kDa

### Applications:

WB IHC IF

### Reactivity:

Human, Mouse, Rat

## Protein Background

This gene encodes a protein that is a member of the dickkopf family. The secreted protein contains two cysteine rich regions and is involved in embryonic development through its interactions with the Wnt signaling pathway. The expression of this gene is decreased in a variety of cancer cell lines and it may function as a tumor suppressor gene. Alternative splicing results in multiple transcript variants encoding the same protein.

## Immunogen information

### Gene ID:

27122

### Uniprot

Q9UBP4

### Synonyms:

DKK3; REIC; RIG

## Antibody Information

### Recommended dilutions:

WB 1:500 - 1:2000 IHC 1:50  
- 1:200 IF 1:50 - 1:200

### Source:

Rabbit

### Isotype:

IgG

### Purification:

Affinity purification

### Immunogen:

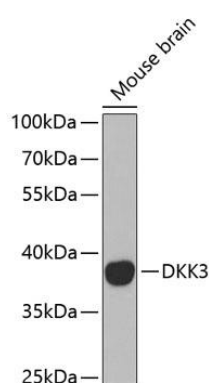
Recombinant fusion protein containing a sequence corresponding to amino acids 22-350 of human DKK3 (NP\_037385.2).

### Storage:

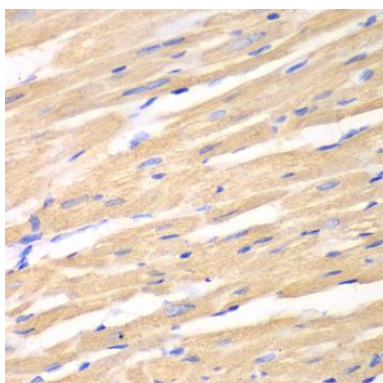
Store at -20°C. Avoid freeze / thaw cycles. Buffer: PBS with 0.02% sodium azide, 50% glycerol, pH7.3.

## Product Images

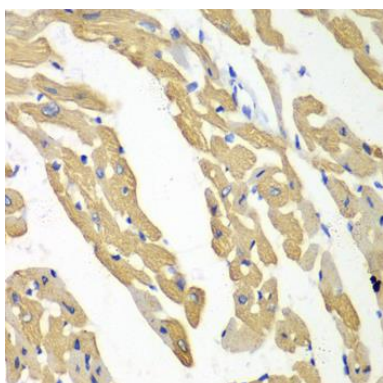
---



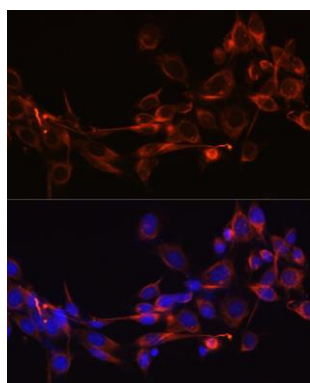
Western blot analysis of extracts of mouse brain, using DKK3 antibody (CAB2527) at 1:1000 dilution. Secondary antibody: HRP Goat Anti-Rabbit IgG (H+L) (CABS014) at 1:10000 dilution. Lysates/proteins: 25ug per lane. Blocking buffer: 3% nonfat dry milk in TBST. Detection: ECL Basic Kit (CABM00020). Exposure time: 90s.



Immunohistochemistry of paraffin-embedded rat heart using DKK3 antibody (CAB2527) at dilution of 1:100 (40x lens).



Immunohistochemistry of paraffin-embedded mouse heart using DKK3 antibody (CAB2527) at dilution of 1:100 (40x lens).



Immunofluorescence analysis of NIH-3T3 cells using DKK3 Polyclonal Antibody (CAB2527) at dilution of 1:100 (40x lens). Blue: DAPI for nuclear staining.