

# TRAF5 Rabbit Polyclonal Antibody



CAB2536

## Product Information

### Size:

20uL, 50uL, 100uL, 200uL

### Observed MW:

64kDa

### Calculated MW:

52kDa/64kDa/65kDa

### Applications:

WB

### Reactivity:

Human

## Protein Background

The scaffold protein encoded by this gene is a member of the tumor necrosis factor receptor-associated factor (TRAF) protein family and contains a meprin and TRAF homology (MATH) domain, a RING-type zinc finger, and two TRAF-type zinc fingers. TRAF proteins are associated with, and mediate signal transduction from members of the TNF receptor superfamily. This protein is one of the components of a multiple protein complex which binds to tumor necrosis factor (TNF) receptor cytoplasmic domains and mediates TNF-induced activation. Multiple transcript variants encoding different isoforms have been found for this gene.

## Immunogen information

### Gene ID:

7188

### Uniprot

O00463

### Synonyms:

TRAF5; MGC:39780; RNF84

## Antibody Information

### Recommended dilutions:

WB 1:500 - 1:2000

### Source:

Rabbit

### Isotype:

IgG

### Purification:

Affinity purification

### Immunogen:

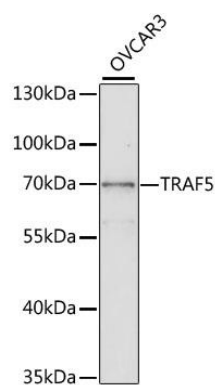
Recombinant fusion protein containing a sequence corresponding to amino acids 1-80 of human TRAF5 (NP\_665702.1).

### Storage:

Store at -20°C. Avoid freeze / thaw cycles. Buffer: PBS with 0.02% sodium azide, 50% glycerol, pH7.3.

## Product Images

---



Western blot analysis of extracts of OVCAR3 cells, using TRAF5 antibody (CAB2536) at 1:1000 dilution. Secondary antibody: HRP Goat Anti-Rabbit IgG (H+L) (CABS014) at 1:10000 dilution. Lysates/proteins: 25ug per lane. Blocking buffer: 3% nonfat dry milk in TBST. Detection: ECL Basic Kit (CABM00020). Exposure time: 15s.