

# ITGB3 Rabbit Polyclonal Antibody



CAB2542

## Product Information

### Size:

20uL, 50uL, 100uL, 200uL

### Observed MW:

100KDa

### Calculated MW:

86kDa/87kDa

### Applications:

WB IHC

### Reactivity:

Human, Mouse, Rat

## Protein Background

The ITGB3 protein product is the integrin beta chain beta 3. Integrins are integral cell-surface proteins composed of an alpha chain and a beta chain. A given chain may combine with multiple partners resulting in different integrins. Integrin beta 3 is found along with the alpha IIb chain in platelets. Integrins are known to participate in cell adhesion as well as cell-surface mediated signalling.

## Immunogen information

### Gene ID:

3690

### Uniprot

P05106

### Synonyms:

BDPLT16; BDPLT2; CD61; GP3A; GPIIIa; GT; Integrin beta 3; ITGB3

## Antibody Information

### Recommended dilutions:

WB 1:500 - 1:2000 IHC 1:50  
- 1:200

### Source:

Rabbit

### Isotype:

IgG

### Purification:

Affinity purification

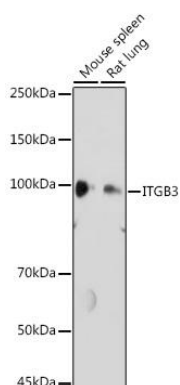
### Immunogen:

Recombinant fusion protein containing a sequence corresponding to amino acids 610-718 of human ITGB3 (NP\_000203.2).

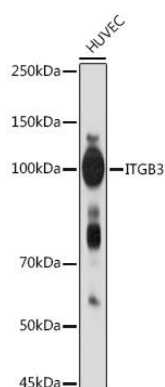
### Storage:

Store at -20°C. Avoid freeze / thaw cycles. Buffer: PBS with 0.02% sodium azide, 50% glycerol, pH7.3.

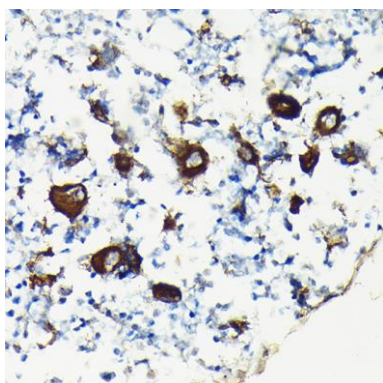
## Product Images



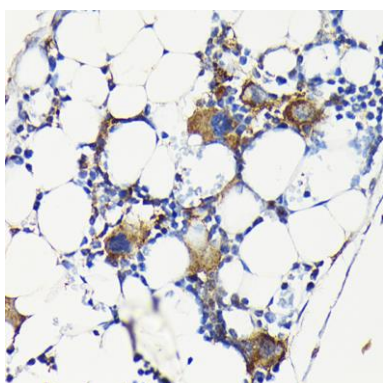
Western blot analysis of extracts of various cell lines, using ITGB3 antibody (CAB2542) at 1:1000 dilution. Secondary antibody: HRP Goat Anti-Rabbit IgG (H+L) (CABS014) at 1:10000 dilution. Lysates/proteins: 25ug per lane. Blocking buffer: 3% nonfat dry milk in TBST. Detection: ECL Basic Kit (CABM00020). Exposure time: 180s.



Western blot analysis of extracts of HUVEC cells, using ITGB3 antibody (CAB2542) at 1:1000 dilution. Secondary antibody: HRP Goat Anti-Rabbit IgG (H+L) (CABS014) at 1:10000 dilution. Lysates/proteins: 25ug per lane. Blocking buffer: 3% nonfat dry milk in TBST. Detection: ECL Basic Kit (CABM00020). Exposure time: 90s.



Immunohistochemistry of paraffin-embedded rat bone marrow using ITGB3 Rabbit pAb (CAB2542) at dilution of 1:100 (40x lens).



Immunohistochemistry of paraffin-embedded mouse bone marrow using ITGB3 Rabbit pAb (CAB2542) at dilution of 1:100 (40x lens).