

NF-kB p65 Rabbit Polyclonal Antibody



CAB2547

Product Information

Size:

20uL, 50uL, 100uL, 200uL

Observed MW:

65kDa

Calculated MW:

58kDa/59kDa/60kDa

Applications:

WB IHC IF IP

Reactivity:

Human, Mouse, Rat

Protein Background

NF-kappa-B is a ubiquitous transcription factor involved in several biological processes. It is held in the cytoplasm in an inactive state by specific inhibitors. Upon degradation of the inhibitor, NF-kappa-B moves to the nucleus and activates transcription of specific genes. NF-kappa-B is composed of NFKB1 or NFKB2 bound to either REL, RELA, or RELB. The most abundant form of NF-kappa-B is NFKB1 complexed with the product of this gene, RELA. Four transcript variants encoding different isoforms have been found for this gene.

Immunogen information

Gene ID:

5970

Uniprot

Q04206

Synonyms:

NFKB3; p65; NF-kB p65; RELA; CMCU

Antibody Information

Recommended dilutions:

WB 1:500 - 1:2000 IHC 1:50
- 1:200 IF 1:50 - 1:200 IP
1:50 - 1:100

Source:

Rabbit

Isotype:

IgG

Purification:

Affinity purification

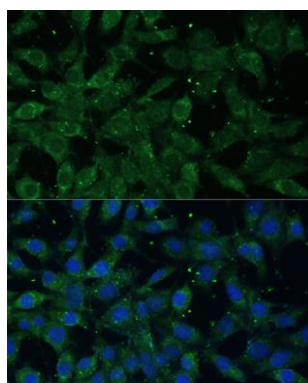
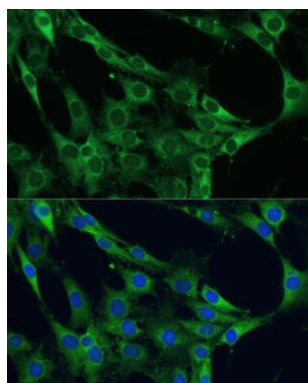
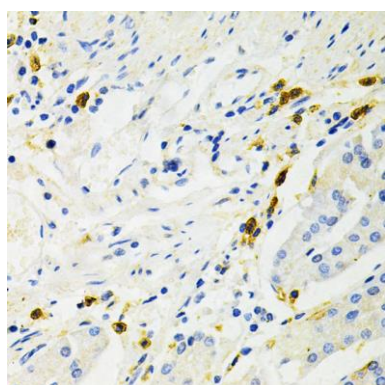
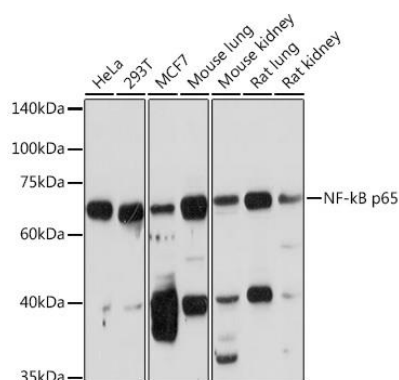
Immunogen:

Recombinant fusion protein containing a sequence corresponding to amino acids 50-180 of human NF-kB p65 (NP_068810.3).

Storage:

Store at -20°C. Avoid freeze / thaw cycles. Buffer: PBS with 0.02% sodium azide, 50% glycerol, pH7.3.

Product Images



Western blot analysis of extracts of various cell lines, using NF-kB p65 Rabbit pAb (CAB2547) at 1:1000 dilution. Secondary antibody: HRP Goat Anti-Rabbit IgG (H+L) (CABS014) at 1:10000 dilution. Lysates/proteins: 25ug per lane. Blocking buffer: 3% nonfat dry milk in TBST. Detection: ECL Basic Kit (CABM00020). Exposure time: 180s.

Immunohistochemistry of paraffin-embedded human stomach using NF-kB p65 Antibody (CAB2547) at dilution of 1:200 (40x lens).

Immunofluorescence analysis of C6 cells using NF-kB p65 antibody (CAB2547) at dilution of 1:100. Blue: DAPI for nuclear staining.

Immunofluorescence analysis of L929 cells using NF-kB p65 antibody (CAB2547) at dilution of 1:100. Blue: DAPI for nuclear staining.