

MT1-MMP Rabbit Polyclonal Antibody



CAB2549

Product Information

Size:

20uL, 50uL, 100uL, 200uL

Observed MW:

46-70kDa

Calculated MW:

65kDa

Applications:

WB IHC

Reactivity:

Human, Mouse, Rat

Antibody Information

Recommended dilutions:

WB 1:500 - 1:2000 IHC 1:50
- 1:100

Source:

Rabbit

Isotype:

IgG

Purification:

Affinity purification

Protein Background

Proteins of the matrix metalloproteinase (MMP) family are involved in the breakdown of extracellular matrix in normal physiological processes, such as embryonic development, reproduction, and tissue remodeling, as well as in disease processes, such as arthritis and metastasis. Most MMP's are secreted as inactive proproteins which are activated when cleaved by extracellular proteinases. However, the protein encoded by this gene is a member of the membrane-type MMP (MT-MMP) subfamily; each member of this subfamily contains a potential transmembrane domain suggesting that these proteins are expressed at the cell surface rather than secreted. This protein activates MMP2 protein, and this activity may be involved in tumor invasion.

Immunogen information

Gene ID:

4323

Uniprot

P50281

Synonyms:

MMP14; MMP-14; MMP-X1; MT-MMP; MT-MMP 1; MT1-MMP;
MT1MMP; MTMMP1; WNCHRS; MT-MMP1

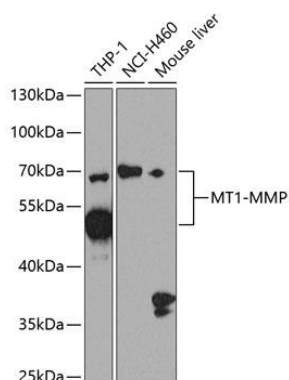
Immunogen:

Recombinant protein of human MT1-MMP

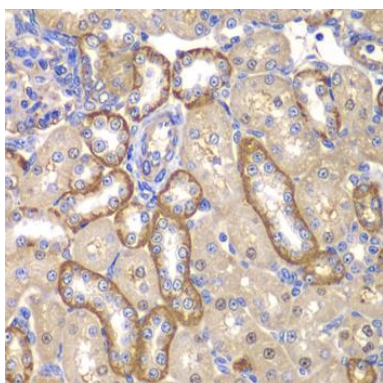
Storage:

Store at -20°C. Avoid freeze / thaw cycles. Buffer: PBS with 0.02% sodium azide, 50% glycerol, pH7.3.

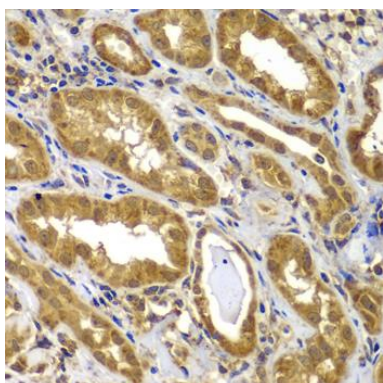
Product Images



Western blot analysis of extracts of various cell lines, using MT1-MMP antibody (CAB2549) at 1:1000 dilution. Secondary antibody: HRP Goat Anti-Rabbit IgG (H+L) (CABS014) at 1:10000 dilution. Lysates/proteins: 25ug per lane. Blocking buffer: 3% nonfat dry milk in TBST. Detection: ECL Basic Kit (CABM00020). Exposure time: 90s.



Immunohistochemistry of paraffin-embedded rat kidney using MT1-MMP antibody (CAB2549) at dilution of 1:100 (40x lens).



Immunohistochemistry of paraffin-embedded human kidney using MT1-MMP antibody (CAB2549) at dilution of 1:100 (40x lens).