

RETN Rabbit Polyclonal Antibody



CAB2551

Product Information

Size:

20uL, 50uL, 100uL, 200uL

Observed MW:

Refer to figures

Calculated MW:

8kDa/11kDa

Applications:

IHC

Reactivity:

Human, Mouse, Rat

Protein Background

This gene belongs to the family defined by the mouse resistin-like genes. The characteristic feature of this family is the C-terminal stretch of 10 cys residues with identical spacing. The mouse homolog of this protein is secreted by adipocytes, and may be the hormone potentially linking obesity to type II diabetes. Alternatively spliced transcript variants encoding the same protein have been found for this gene.

Immunogen information

Gene ID:

56729

Uniprot

Q9HD89

Synonyms:

RETN; ADSF; FIZZ3; RETN1; RSTN; XCP1; resistin

Antibody Information

Recommended dilutions:

IHC 1:50 - 1:100

Source:

Rabbit

Isotype:

IgG

Purification:

Affinity purification

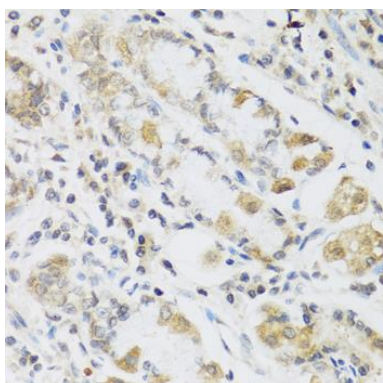
Immunogen:

Recombinant fusion protein containing a sequence corresponding to amino acids 1-108 of human RETN (NP_001180303.1).

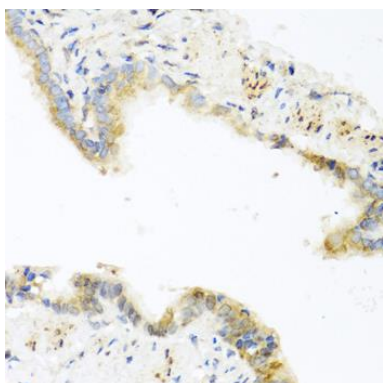
Storage:

Store at -20°C. Avoid freeze / thaw cycles. Buffer: PBS with 0.02% sodium azide, 50% glycerol, pH7.3.

Product Images



Immunohistochemistry of paraffin-embedded human stomach using RETN antibody (CAB2551) at dilution of 1:100 (40x lens).



Immunohistochemistry of paraffin-embedded mouse lung using RETN antibody (CAB2551) at dilution of 1:100 (40x lens).