

# [KO Validated] HMGB1 Rabbit Polyclonal Antibody

## CAB2553



### Product Information

**Size:**

20uL, 50uL, 100uL, 200uL

**Observed MW:**

25KDa

**Calculated MW:**

24kDa

**Applications:**

WB IHC IF

**Reactivity:**

Human, Mouse, Rat

### Protein Background

This gene encodes a protein that belongs to the High Mobility Group-box superfamily. The encoded non-histone, nuclear DNA-binding protein regulates transcription, and is involved in organization of DNA. This protein plays a role in several cellular processes, including inflammation, cell differentiation and tumor cell migration. Multiple pseudogenes of this gene have been identified. Alternative splicing results in multiple transcript variants that encode the same protein.

### Immunogen information

**Gene ID:**

3146

**Uniprot**

P09429

**Synonyms:**

HMG-1; HMG1; HMG3; SBP-1; HMGB1

### Antibody Information

**Recommended dilutions:**

WB 1:500 - 1:2000 IHC 1:50  
- 1:200 IF 1:50 - 1:200

**Source:**

Rabbit

**Isotype:**

IgG

**Purification:**

Affinity purification

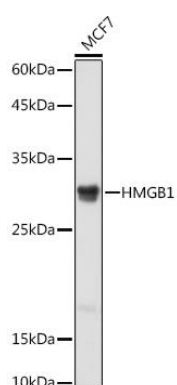
**Immunogen:**

A synthetic peptide corresponding to a sequence within amino acids 100-200 of human HMGB1 (NP\_002119.1).

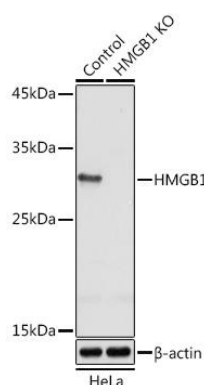
**Storage:**

Store at -20°C. Avoid freeze / thaw cycles. Buffer: PBS with 0.02% sodium azide, 50% glycerol, pH7.3.

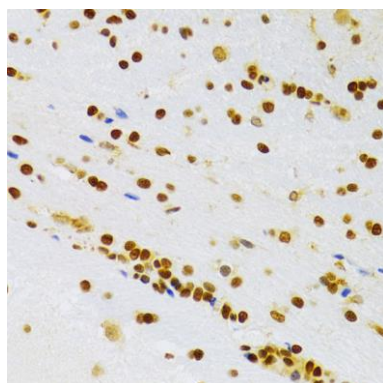
## Product Images



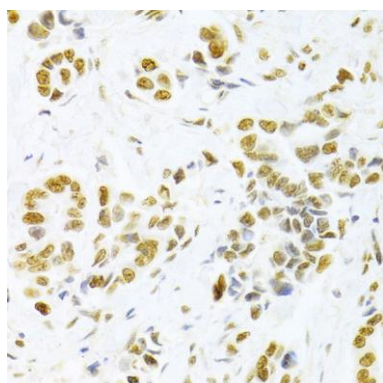
Western blot analysis of extracts of MCF7 cells, using [KO Validated] HMGB1 Rabbit pAb (CAB2553) at 1:1000 dilution. Secondary antibody: HRP Goat Anti-Rabbit IgG (H+L) (CABS014) at 1:10000 dilution. Lysates/proteins: 25ug per lane. Blocking buffer: 3% nonfat dry milk in TBST. Detection: ECL Basic Kit (CABM00020). Exposure time: 1s.



Western blot analysis of extracts from normal (control) and [KO Validated] HMGB1 Rabbit pAb knockout (KO) HeLa cells, using [KO Validated] HMGB1 Rabbit pAb antibody (CAB2553) at 1:1000 dilution. Secondary antibody: HRP Goat Anti-Rabbit IgG (H+L) (CABS014) at 1:10000 dilution. Lysates/proteins: 25ug per lane. Blocking buffer: 3% nonfat dry milk in TBST. Detection: ECL Basic Kit (CABM00020). Exposure time: 1s.



Immunohistochemistry of paraffin-embedded rat brain using HMGB1 Antibody (CAB2553) at dilution of 1:100 (40x lens).



Immunohistochemistry of paraffin-embedded human breast cancer using HMGB1 Antibody (CAB2553) at dilution of 1:100 (40x lens).