

# cFLIP Rabbit Polyclonal Antibody



**CAB2555**

---

## Product Information

### Size:

20uL, 50uL, 100uL, 200uL

### Observed MW:

28kDa/55kDa

### Calculated MW:

23-55kDa

### Applications:

WB IHC

### Reactivity:

Human, Mouse, Rat

## Antibody Information

### Recommended dilutions:

WB 1:500 - 1:2000 IHC 1:50  
- 1:200

### Source:

Rabbit

### Isotype:

IgG

### Purification:

Affinity purification

## Protein Background

The protein encoded by this gene is a regulator of apoptosis and is structurally similar to caspase-8. However, the encoded protein lacks caspase activity and appears to be itself cleaved into two peptides by caspase-8. Several transcript variants encoding different isoforms have been found for this gene, and partial evidence for several more variants exists.

## Immunogen information

### Gene ID:

8837

### Uniprot

O15519

### Synonyms:

CFLAR; CASH; CASP8AP1; CLARP; Casper; FLAME; FLAME-1;  
FLAME1; FLIP; I-FLICE; MRIT; c-FLIP; c-FLIPL; c-FLIPR; c-FLIPS

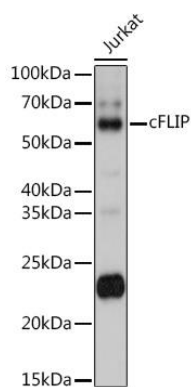
### Immunogen:

Recombinant fusion protein containing a sequence corresponding to amino acids 161-480 of human cFLIP (NP\_001120655.1).

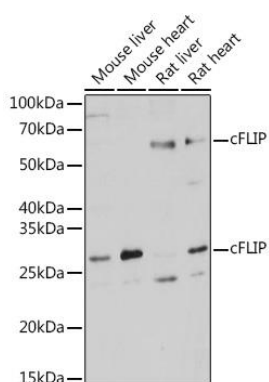
### Storage:

Store at -20°C. Avoid freeze / thaw cycles. Buffer: PBS with 0.02% sodium azide, 50% glycerol, pH7.3.

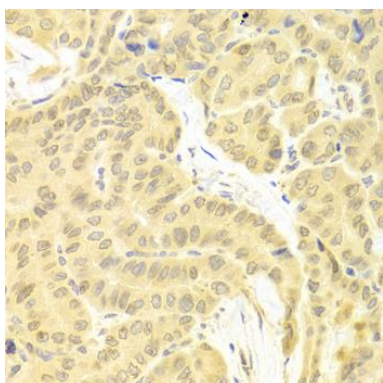
## Product Images



Western blot analysis of extracts of Jurkat cells, using cFLIP antibody (CAB2555) at 1:1000 dilution. Secondary antibody: HRP Goat Anti-Rabbit IgG (H+L) (CABS014) at 1:10000 dilution. Lysates/proteins: 25ug per lane. Blocking buffer: 3% nonfat dry milk in TBST. Detection: ECL Basic Kit (CABM00020). Exposure time: 90s.



Western blot analysis of extracts of various cell lines, using cFLIP antibody (CAB2555) at 1:1000 dilution. Secondary antibody: HRP Goat Anti-Rabbit IgG (H+L) (CABS014) at 1:10000 dilution. Lysates/proteins: 25ug per lane. Blocking buffer: 3% nonfat dry milk in TBST. Detection: ECL Basic Kit (CABM00020). Exposure time: 10s.



Immunohistochemistry of paraffin-embedded human thyroid cancer using cFLIP antibody (CAB2555) at dilution of 1:100 (40x lens).