

VEGFC Rabbit Polyclonal Antibody



CAB2556

Product Information

Size:

20uL, 50uL, 100uL, 200uL

Observed MW:

47kDa

Calculated MW:

46kDa

Applications:

WB, IHC

Reactivity:

Human, Mouse, Rat

Category:

Polyclonal Antibodies

Antibody Information

Recommended dilutions:

WB 1:500 - 1:2000

IHC 1:100 - 1:200

Source:

Rabbit

Isotype:

IgG

Purification:

Affinity purification

Protein Background

The protein encoded by this gene is a member of the platelet-derived growth factor/vascular endothelial growth factor (PDGF/VEGF) family. The encoded protein promotes angiogenesis and endothelial cell growth, and can also affect the permeability of blood vessels. The proprotein is further cleaved into a fully processed form that can bind and activate VEGFR-2 and VEGFR-3 receptors.

Immunogen information

Gene ID:

7424

Uniprot

P49767

Synonyms:

VEGFC; Flt4-L; LMPH1D; VRP

Immunogen:

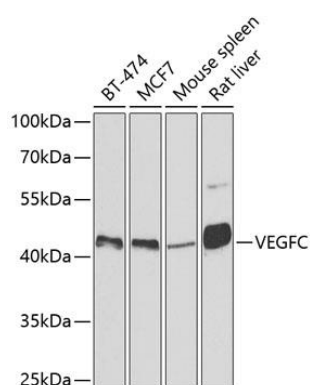
A synthetic peptide of human VEGFC

Storage:

Store at -20°C. Avoid freeze / thaw cycles.

Buffer: PBS with 0.02% sodium azide, 50% glycerol, pH7.3.

Product Images



Western blot analysis of extracts of various cell lines, using VEGFC antibody (CAB2556) at 1:500 dilution.

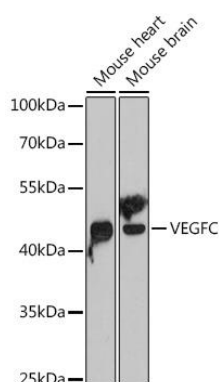
Secondary antibody: HRP Goat Anti-Rabbit IgG (H+L) (CABS014) at 1:10000 dilution.

Lysates/proteins: 25ug per lane.

Blocking buffer: 3% non-fat dry milk in TBST.

Detection: ECL Basic Kit (AbGn00020).

Exposure time: 90s.



Western blot analysis of extracts of various cell lines, using VEGFC antibody (CAB2556) at 1:1000 dilution.

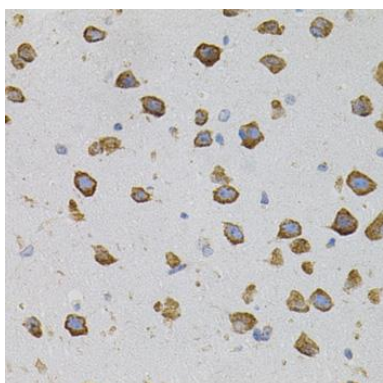
Secondary antibody: HRP Goat Anti-Rabbit IgG (H+L) (CABS014) at 1:10000 dilution.

Lysates/proteins: 25ug per lane.

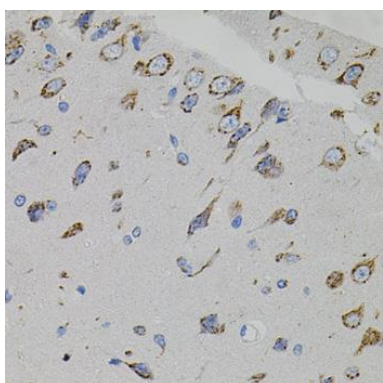
Blocking buffer: 3% non-fat dry milk in TBST.

Detection: ECL Basic Kit (AbGn200020).

Exposure time: 90s.



Immunohistochemistry of paraffin-embedded mouse brain using VEGFC antibody (CAB2556) (40x lens).



Immunohistochemistry of paraffin-embedded rat brain using VEGFC antibody (CAB2556) (40x lens).