

GZMB Rabbit Polyclonal Antibody



CAB2557

Product Information

Size:

20uL, 50uL, 100uL, 200uL

Observed MW:

30KDa

Calculated MW:

27kDa

Applications:

WB IHC IF

Reactivity:

Human, Mouse, Rat

Antibody Information

Recommended dilutions:

WB 1:500 - 1:2000 IHC 1:50
- 1:200 IF 1:50 - 1:200

Source:

Rabbit

Isotype:

IgG

Purification:

Affinity purification

Protein Background

Cytolytic T lymphocytes (CTL) and natural killer (NK) cells share the remarkable ability to recognize, bind, and lyse specific target cells. They are thought to protect their host by lysing cells bearing on their surface 'nonself' antigens, usually peptides or proteins resulting from infection by intracellular pathogens. The protein encoded by this gene is crucial for the rapid induction of target cell apoptosis by CTL in cell-mediated immune response.

Immunogen information

Gene ID:

3002

Uniprot

P10144

Synonyms:

C11; CCPI; CGL-1; CGL1; CSP-B; CSPB; CTLA1; CTSL1; HLP; SECT;
Granzyme B; GZMB

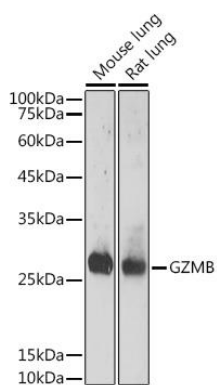
Immunogen:

Recombinant fusion protein containing a sequence corresponding to amino acids 148-247 of human GZMB (NP_004122.2).

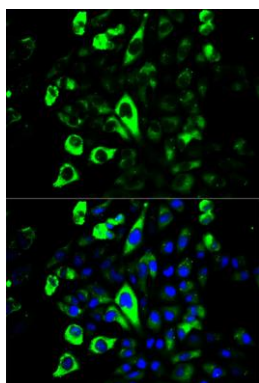
Storage:

Store at -20°C. Avoid freeze / thaw cycles. Buffer: PBS with 0.02% sodium azide, 50% glycerol, pH7.3.

Product Images



Western blot analysis of extracts of various cell lines, using GZMB antibody (CAB2557) at 1:500 dilution. Secondary antibody: HRP Goat Anti-Rabbit IgG (H+L) (CABS014) at 1:10000 dilution. Lysates/proteins: 25ug per lane. Blocking buffer: 3% nonfat dry milk in TBST. Detection: ECL Enhanced Kit (CABM00021). Exposure time: 180s.



Immunofluorescence analysis of U2OS cells using GZMB antibody (CAB2557). Blue: DAPI for nuclear staining.