

# MRE11A Rabbit Polyclonal Antibody



CAB2559

## Product Information

### Size:

20uL, 50uL, 100uL, 200uL

### Observed MW:

90kDa-100kDa

### Calculated MW:

77kDa/80kDa/81kDa

### Applications:

WB IF IP

### Reactivity:

Human, Mouse, Rat

## Antibody Information

### Recommended dilutions:

WB 1:500 - 1:2000 IF 1:50 -  
1:200 IP 1:50 - 1:100

### Source:

Rabbit

### Isotype:

IgG

### Purification:

Affinity purification

## Protein Background

This gene encodes a nuclear protein involved in homologous recombination, telomere length maintenance, and DNA double-strand break repair. By itself, the protein has 3' to 5' exonuclease activity and endonuclease activity. The protein forms a complex with the RAD50 homolog; this complex is required for nonhomologous joining of DNA ends and possesses increased single-stranded DNA endonuclease and 3' to 5' exonuclease activities. In conjunction with a DNA ligase, this protein promotes the joining of noncomplementary ends in vitro using short homologies near the ends of the DNA fragments. This gene has a pseudogene on chromosome 3. Alternative splicing of this gene results in two transcript variants encoding different isoforms.

## Immunogen information

### Gene ID:

4361

### Uniprot

P49959

### Synonyms:

MRE11; ATLD; HNGS1; MRE11A; MRE11B

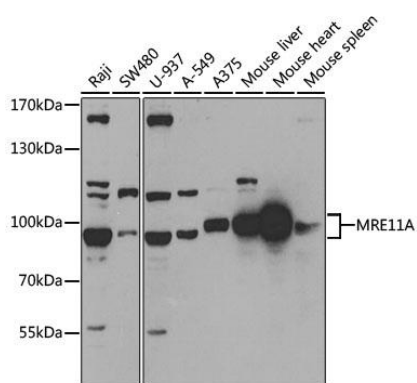
### Immunogen:

Recombinant fusion protein containing a sequence corresponding to amino acids 1-205 of human MRE11A (NP\_005581.2).

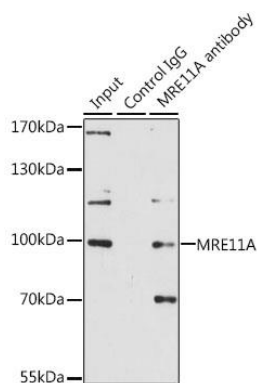
### Storage:

Store at -20°C. Avoid freeze / thaw cycles. Buffer: PBS with 0.02% sodium azide, 50% glycerol, pH7.3.

## Product Images



Western blot analysis of extracts of various cell lines, using MRE11A antibody (CAB2559) at 1:1000 dilution. Secondary antibody: HRP Goat Anti-Rabbit IgG (H+L) (CABS014) at 1:10000 dilution. Lysates/proteins: 25ug per lane. Blocking buffer: 3% nonfat dry milk in TBST.



Immunoprecipitation analysis of 200ug extracts of A-549 cells, using 3 ug MRE11A antibody (CAB2559). Western blot was performed from the immunoprecipitate using MRE11A antibody (CAB2559) at a dilution of 1:1000.