

GNB2L1 Rabbit Polyclonal Antibody



CAB2560

Product Information

Size:

20uL, 50uL, 100uL, 200uL

Observed MW:

32kDa

Calculated MW:

35kDa

Applications:

WB IF

Reactivity:

Human, Mouse

Antibody Information

Recommended dilutions:

WB 1:500 - 1:2000 IF 1:50 - 1:200

Source:

Rabbit

Isotype:

IgG

Purification:

Affinity purification

Protein Background

Immunogen information

Gene ID:

10399

Uniprot

P63244

Synonyms:

RACK1; GNB2L1; Gnb2-rs1; H12.3; HLC-7; PIG21

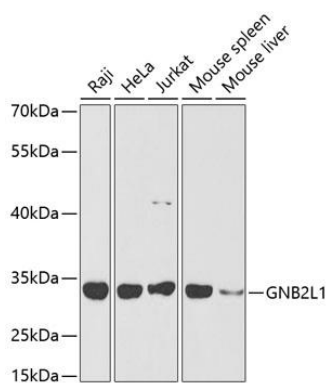
Immunogen:

Recombinant fusion protein containing a sequence corresponding to amino acids 30-290 of human GNB2L1 (NP_006089.1).

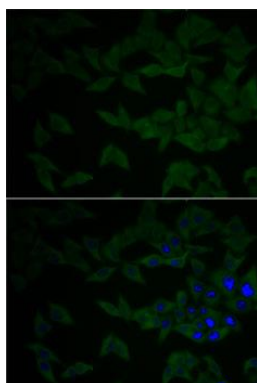
Storage:

Store at -20°C. Avoid freeze / thaw cycles. Buffer: PBS with 0.02% sodium azide, 50% glycerol, pH7.3.

Product Images



Western blot analysis of extracts of various cell lines, using GNB2L1 antibody (CAB2560) at 1:1000 dilution. Secondary antibody: HRP Goat Anti-Rabbit IgG (H+L) (CABS014) at 1:10000 dilution. Lysates/proteins: 25ug per lane. Blocking buffer: 3% nonfat dry milk in TBST.



Immunofluorescence analysis of HeLa cells using GNB2L1 antibody (CAB2560). Blue: DAPI for nuclear staining.