

# [KO Validated] AIF Rabbit Polyclonal Antibody



CAB2568

## Product Information

### Size:

20uL, 50uL, 100uL, 200uL

### Observed MW:

67kDa

### Calculated MW:

26kDa/28kDa/35kDa/66kDa

### Applications:

WB IHC IF IP

### Reactivity:

Human, Mouse, Rat

## Antibody Information

### Recommended dilutions:

WB 1:500 - 1:2000 IHC 1:50  
- 1:200 IF 1:50 - 1:200 IP  
1:50 - 1:100

### Source:

Rabbit

### Isotype:

IgG

### Purification:

Affinity purification

## Protein Background

This gene encodes a flavoprotein essential for nuclear disassembly in apoptotic cells, and it is found in the mitochondrial intermembrane space in healthy cells. Induction of apoptosis results in the translocation of this protein to the nucleus where it affects chromosome condensation and fragmentation. In addition, this gene product induces mitochondria to release the apoptogenic proteins cytochrome c and caspase-9. Mutations in this gene cause combined oxidative phosphorylation deficiency 6 (COXPD6), a severe mitochondrial encephalomyopathy, as well as Cowchock syndrome, also known as X-linked recessive Charcot-Marie-Tooth disease-4 (CMTX-4), a disorder resulting in neuropathy, and axonal and motor-sensory defects with deafness and mental retardation. Alternative splicing results in multiple transcript variants. A related pseudogene has been identified on chromosome 10.

## Immunogen information

### Gene ID:

9131

### Uniprot

O95831

### Synonyms:

AIF; CMT2D; CMTX4; COWCK; COXPD6; DFNX5; NADMR; NAMSD;  
PDCD8; AIFM1

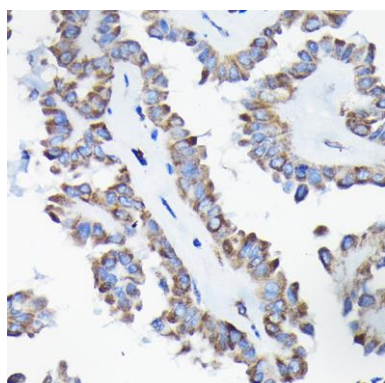
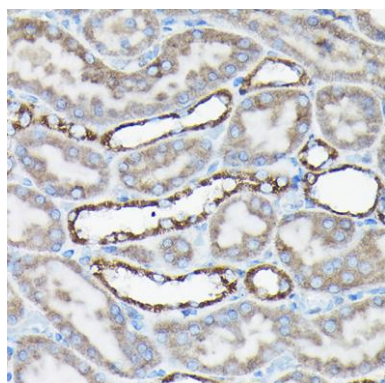
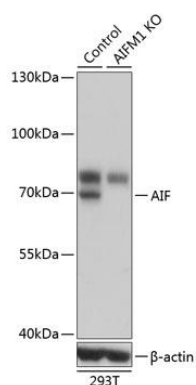
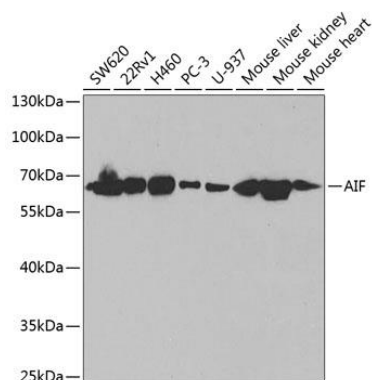
### Immunogen:

Recombinant fusion protein containing a sequence corresponding to amino acids 334-613 of human AIF (NP\_004199.1).

### Storage:

Store at -20°C. Avoid freeze / thaw cycles. Buffer: PBS with 0.02% sodium azide, 50% glycerol, pH7.3.

## Product Images



Western blot analysis of extracts of various cell lines, using AIF antibody (CAB2568) at 1:1000 dilution. Secondary antibody: HRP Goat Anti-Rabbit IgG (H+L) (CABS014) at 1:10000 dilution. Lysates/proteins: 25ug per lane. Blocking buffer: 3% nonfat dry milk in TBST.

Western blot analysis of extracts from normal (control) and AIF knockout (KO) 293T cells, using AIF antibody (CAB2568) at 1:1000 dilution. Secondary antibody: HRP Goat Anti-Rabbit IgG (H+L) (CABS014) at 1:10000 dilution. Lysates/proteins: 25ug per lane. Blocking buffer: 3% nonfat dry milk in TBST. Detection: ECL Basic Kit (CABM00020). Exposure time: 1s.

Immunohistochemistry of paraffin-embedded rat kidney using [KO Validated] AIF Rabbit pAb (CAB2568) at dilution of 1:50 (40x lens).

Immunohistochemistry of paraffin-embedded human thyroid cancer using [KO Validated] AIF Rabbit pAb (CAB2568) at dilution of 1:50 (40x lens).