

KRT7 Rabbit Polyclonal Antibody



CAB2574

Product Information

Size:

20uL, 50uL, 100uL, 200uL

Observed MW:

51kDa

Calculated MW:

51kDa

Applications:

WB IHC IF

Reactivity:

Human, Mouse, Rat

Protein Background

The protein encoded by this gene is a member of the keratin gene family. The type II cytokeratins consist of basic or neutral proteins which are arranged in pairs of heterotypic keratin chains coexpressed during differentiation of simple and stratified epithelial tissues. This type II cytokeratin is specifically expressed in the simple epithelia lining the cavities of the internal organs and in the gland ducts and blood vessels. The genes encoding the type II cytokeratins are clustered in a region of chromosome 12q12-q13. Alternative splicing may result in several transcript variants; however, not all variants have been fully described.

Immunogen information

Gene ID:

3855

Uniprot

P08729

Synonyms:

KRT7; CK7; K2C7; K7; SCL; keratin 7; Keratin

Antibody Information

Recommended dilutions:

WB 1:500 - 1:2000 IHC 1:50
- 1:200 IF 1:50 - 1:200

Source:

Rabbit

Isotype:

IgG

Purification:

Affinity purification

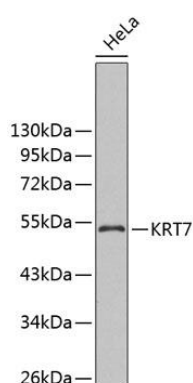
Immunogen:

Recombinant fusion protein containing a sequence corresponding to amino acids 230-469 of human KRT7 (NP_005547.3).

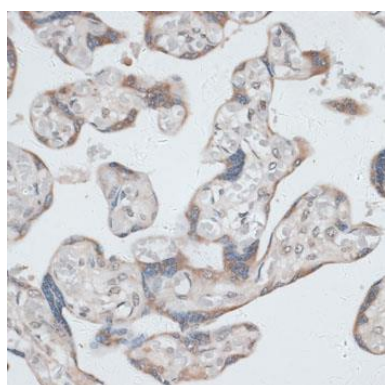
Storage:

Store at -20°C. Avoid freeze / thaw cycles. Buffer: PBS with 0.02% sodium azide, 50% glycerol, pH7.3.

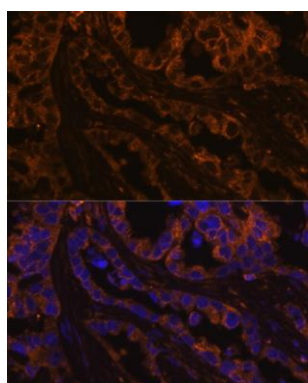
Product Images



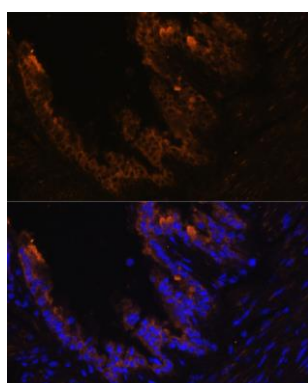
Western blot analysis of extracts of HeLa cells, using KRT7 antibody (CAB2574). Secondary antibody: HRP Goat Anti-Rabbit IgG (H+L) (CABS014) at 1:10000 dilution. Lysates/proteins: 25ug per lane. Blocking buffer: 3% nonfat dry milk in TBST.



Immunohistochemistry of paraffin-embedded human placenta using KRT7 antibody (CAB2574) at dilution of 1:100 (40x lens).



Immunofluorescence analysis of human lung cancer cells using KRT7 antibody (CAB2574) at dilution of 1:100. Blue: DAPI for nuclear staining.



Immunofluorescence analysis of mouse bronchus cells using KRT7 antibody (CAB2574) at dilution of 1:100. Blue: DAPI for nuclear staining.