

# FES Rabbit Polyclonal Antibody



CAB2578

---

## Product Information

### Size:

20uL, 50uL, 100uL, 200uL

### Observed MW:

98kDa

### Calculated MW:

78kDa/85kDa/86kDa/93kDa

### Applications:

WB

### Reactivity:

Mouse

## Antibody Information

### Recommended dilutions:

WB 1:500 - 1:2000

### Source:

Rabbit

### Isotype:

IgG

### Purification:

Affinity purification

## Protein Background

This gene encodes the human cellular counterpart of a feline sarcoma retrovirus protein with transforming capabilities. The gene product has tyrosine-specific protein kinase activity and that activity is required for maintenance of cellular transformation. Its chromosomal location has linked it to a specific translocation event identified in patients with acute promyelocytic leukemia but it is also involved in normal hematopoiesis as well as growth factor and cytokine receptor signaling. Alternative splicing results in multiple variants encoding different isoforms.

## Immunogen information

### Gene ID:

2242

### Uniprot

P07332

### Synonyms:

FES; FPS

### Immunogen:

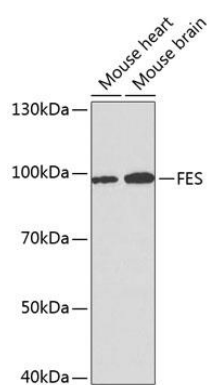
Recombinant fusion protein containing a sequence corresponding to amino acids 120-420 of human FES (NP\_001137256.1).

### Storage:

Store at -20°C. Avoid freeze / thaw cycles. Buffer: PBS with 0.02% sodium azide, 50% glycerol, pH7.3.

## Product Images

---



Western blot analysis of extracts of various cell lines, using FES antibody (CAB2578) at 1:1000 dilution. Secondary antibody: HRP Goat Anti-Rabbit IgG (H+L) (CABS014) at 1:10000 dilution. Lysates/proteins: 25ug per lane. Blocking buffer: 3% nonfat dry milk in TBST.