

# TPI1 Rabbit Polyclonal Antibody



CAB2579

---

## Product Information

### Size:

20uL, 50uL, 100uL, 200uL

### Observed MW:

27kDa

### Calculated MW:

17kDa/26kDa/30kDa

### Applications:

WB IHC IF

### Reactivity:

Human, Mouse

## Protein Background

This gene encodes an enzyme, consisting of two identical proteins, which catalyzes the isomerization of glyceraldehydes 3-phosphate (G3P) and dihydroxy-acetone phosphate (DHAP) in glycolysis and gluconeogenesis. Mutations in this gene are associated with triosephosphate isomerase deficiency. Pseudogenes have been identified on chromosomes 1, 4, 6 and 7. Alternative splicing results in multiple transcript variants.

## Immunogen information

### Gene ID:

7167

### Uniprot

P60174

### Synonyms:

TPI1; HEL-S-49; TIM; TPI; TPID

## Antibody Information

### Recommended dilutions:

WB 1:500 - 1:2000 IHC 1:50  
- 1:200 IF 1:50 - 1:200

### Source:

Rabbit

### Isotype:

IgG

### Purification:

Affinity purification

### Immunogen:

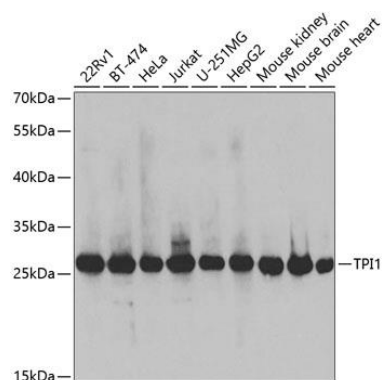
Recombinant fusion protein containing a sequence corresponding to amino acids 1-249 of human TPI1 (NP\_000356.1).

### Storage:

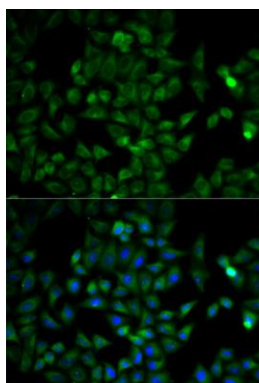
Store at -20°C. Avoid freeze / thaw cycles. Buffer: PBS with 0.02% sodium azide, 50% glycerol, pH7.3.

## Product Images

---



Western blot analysis of extracts of various cell lines, using TPI1 antibody (CAB2579) at 1:1000 dilution. Secondary antibody: HRP Goat Anti-Rabbit IgG (H+L) (CABS014) at 1:10000 dilution. Lysates/proteins: 25ug per lane. Blocking buffer: 3% nonfat dry milk in TBST.



Immunofluorescence analysis of HeLa cells using TPI1 antibody (CAB2579). Blue: DAPI for nuclear staining.