

MEF2C Rabbit Polyclonal Antibody



CAB2585

Product Information

Size:

20uL, 50uL, 100uL, 200uL

Observed MW:

55kDa

Calculated MW:

44kDa/47kDa/50kDa/51kDa/
52kDa

Applications:

WB IHC

Reactivity:

Human, Mouse, Rat

Antibody Information

Recommended dilutions:

WB 1:500 - 1:2000 IHC 1:50
- 1:200

Source:

Rabbit

Isotype:

IgG

Purification:

Affinity purification

Protein Background

This locus encodes a member of the MADS box transcription enhancer factor 2 (MEF2) family of proteins, which play a role in myogenesis. The encoded protein, MEF2 polypeptide C, has both trans-activating and DNA binding activities. This protein may play a role in maintaining the differentiated state of muscle cells. Mutations and deletions at this locus have been associated with severe mental retardation, stereotypic movements, epilepsy, and cerebral malformation. Alternatively spliced transcript variants have been described.

Immunogen information

Gene ID:

4208

Uniprot

Q06413

Synonyms:

MEF2C; C5DELq14.3; DEL5q14.3

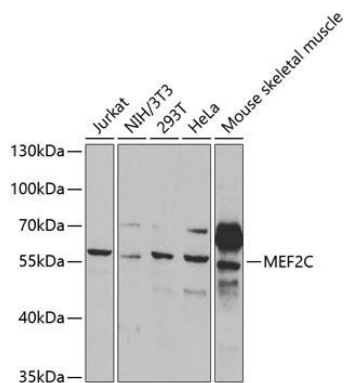
Immunogen:

Recombinant fusion protein containing a sequence corresponding to amino acids 170-380 of human MEF2C (NP_001180279.1).

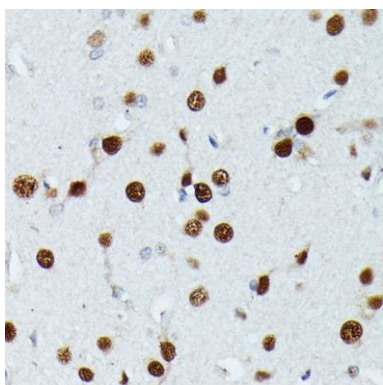
Storage:

Store at -20°C. Avoid freeze / thaw cycles. Buffer: PBS with 0.02% sodium azide, 50% glycerol, pH7.3.

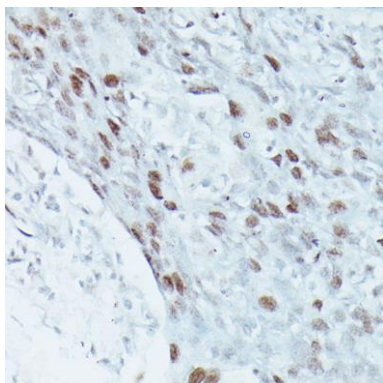
Product Images



Western blot analysis of extracts of various cell lines, using MEF2C antibody (CAB2585) at 1:1000 dilution. Secondary antibody: HRP Goat Anti-Rabbit IgG (H+L) (CABS014) at 1:10000 dilution. Lysates/proteins: 25ug per lane. Blocking buffer: 3% nonfat dry milk in TBST.



Immunohistochemistry of paraffin-embedded rat brain using MEF2C antibody (CAB2585) at dilution of 1:100 (40x lens).



Immunohistochemistry of paraffin-embedded human breast cancer using MEF2C antibody (CAB2585) at dilution of 1:100 (40x lens).