

# SDHA Rabbit Polyclonal Antibody



CAB2594

## Product Information

### Size:

20uL, 50uL, 100uL, 200uL

### Observed MW:

70kDa

### Calculated MW:

56kDa/67kDa/72kDa

### Applications:

WB IHC IF

### Reactivity:

Human, Mouse, Rat

## Protein Background

This gene encodes a major catalytic subunit of succinate-ubiquinone oxidoreductase, a complex of the mitochondrial respiratory chain. The complex is composed of four nuclear-encoded subunits and is localized in the mitochondrial inner membrane. Mutations in this gene have been associated with a form of mitochondrial respiratory chain deficiency known as Leigh Syndrome. A pseudogene has been identified on chromosome 3q29. Alternatively spliced transcript variants encoding different isoforms have been found for this gene.

## Immunogen information

### Gene ID:

6389

### Uniprot

P31040

### Synonyms:

SDHA; CMD1GG; FP; PGL5; SDH1; SDH2; SDHF

## Antibody Information

### Recommended dilutions:

WB 1:500 - 1:2000 IHC 1:50  
- 1:200 IF 1:10 - 1:100

### Source:

Rabbit

### Isotype:

IgG

### Purification:

Affinity purification

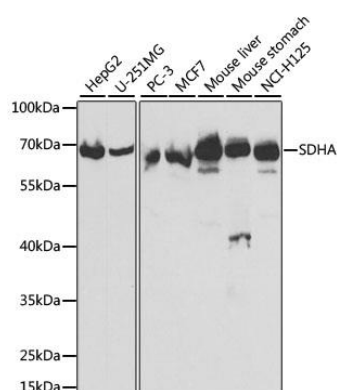
### Immunogen:

Recombinant fusion protein containing a sequence corresponding to amino acids 385-664 of human SDHA (NP\_004159.2).

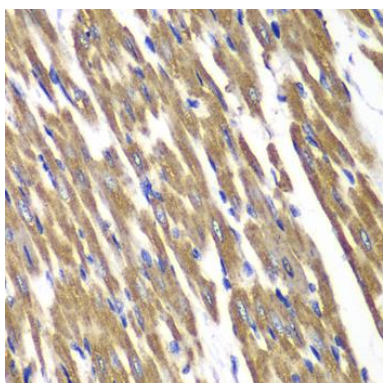
### Storage:

Store at -20°C. Avoid freeze / thaw cycles. Buffer: PBS with 0.02% sodium azide, 50% glycerol, pH7.3.

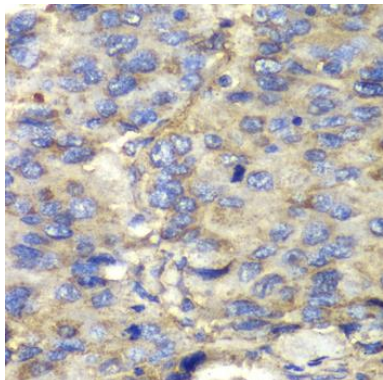
## Product Images



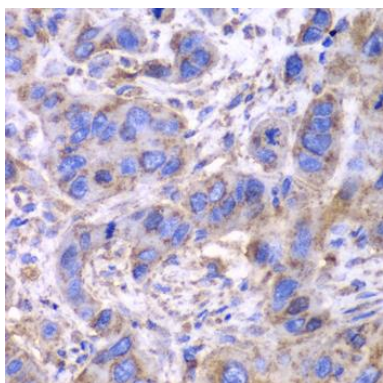
Western blot analysis of extracts of various cell lines, using SDHA antibody (CAB2594) at 1:1000 dilution. Secondary antibody: HRP Goat Anti-Rabbit IgG (H+L) (CABS014) at 1:10000 dilution. Lysates/proteins: 25ug per lane. Blocking buffer: 3% nonfat dry milk in TBST. Detection: ECL Basic Kit (CABM00020). Exposure time: 3s.



Immunohistochemistry of paraffin-embedded rat heart using SDHA antibody (CAB2594) at dilution of 1:100 (40x lens).



Immunohistochemistry of paraffin-embedded human liver cancer using SDHA antibody (CAB2594) at dilution of 1:100 (40x lens).



Immunohistochemistry of paraffin-embedded human esophageal cancer using SDHA antibody (CAB2594) at dilution of 1:100 (40x lens).