

# Occludin Rabbit Polyclonal Antibody



CAB2601

---

## Product Information

### Size:

20uL, 50uL, 100uL, 200uL

### Observed MW:

59kDa

### Calculated MW:

8kDa/23kDa/31kDa/52kDa/54kDa/59kDa

### Applications:

WB IHC IF

### Reactivity:

Human, Mouse, Rat

## Antibody Information

### Recommended dilutions:

WB 1:1000 - 1:2000 IHC  
1:50 - 1:200 IF 1:50 - 1:200

### Source:

Rabbit

### Isotype:

IgG

### Purification:

Affinity purification

## Protein Background

This gene encodes an integral membrane protein that is required for cytokine-induced regulation of the tight junction paracellular permeability barrier. Mutations in this gene are thought to be a cause of band-like calcification with simplified gyration and polymicrogyria (BLC-PMG), an autosomal recessive neurologic disorder that is also known as pseudo-TORCH syndrome. Alternative splicing results in multiple transcript variants. A related pseudogene is present 1.5 Mb downstream on the q arm of chromosome 5.

## Immunogen information

### Gene ID:

100506658

### Uniprot

Q16625

### Synonyms:

OCLN; BLCPMG; PPP1R115; PTORCH1; occludin; Occludin

### Immunogen:

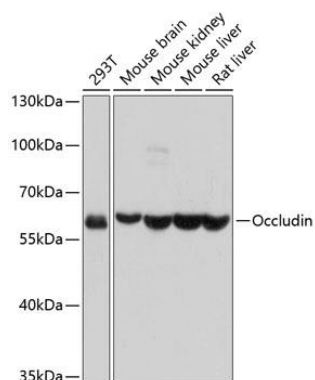
Recombinant fusion protein containing a sequence corresponding to amino acids 263-522 of human Occludin (NP\_002529.1).

### Storage:

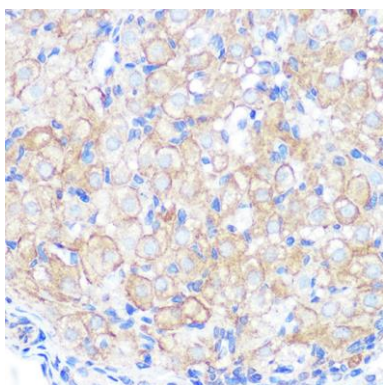
Store at -20°C. Avoid freeze / thaw cycles. Buffer: PBS with 0.02% sodium azide, 50% glycerol, pH7.3.

## Product Images

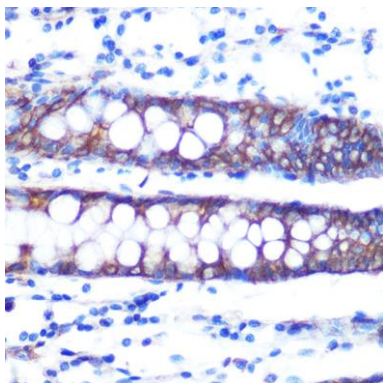
---



Western blot analysis of extracts of various cell lines, using Occludin antibody (CAB2601) at 1:1000 dilution. Secondary antibody: HRP Goat Anti-Rabbit IgG (H+L) (CABS014) at 1:10000 dilution. Lysates/proteins: 25ug per lane. Blocking buffer: 3% nonfat dry milk in TBST. Detection: ECL Basic Kit (CABM00020). Exposure time: 1s.



Immunohistochemistry of paraffin-embedded rat ovary using Occludin Rabbit pAb (CAB2601) at dilution of 1:100 (40x lens).



Immunohistochemistry of paraffin-embedded human colon using Occludin Rabbit pAb (CAB2601) at dilution of 1:100 (40x lens).