

MSI1 Rabbit Polyclonal Antibody



CAB2609

Product Information

Size:

20uL, 50uL, 100uL, 200uL

Observed MW:

42KDa

Calculated MW:

39kDa

Applications:

WB IHC IF

Reactivity:

Human, Mouse, Rat

Protein Background

This gene encodes a protein containing two conserved tandem RNA recognition motifs. Similar proteins in other species function as RNA-binding proteins and play central roles in posttranscriptional gene regulation. Expression of this gene has been correlated with the grade of the malignancy and proliferative activity in gliomas and melanomas. A pseudogene for this gene is located on chromosome 11q13.

Immunogen information

Gene ID:

4440

Uniprot

O43347

Synonyms:

MSI1

Antibody Information

Recommended dilutions:

WB 1:500 - 1:1000 IHC 1:50
- 1:100 IF 1:50 - 1:100

Source:

Rabbit

Isotype:

IgG

Purification:

Affinity purification

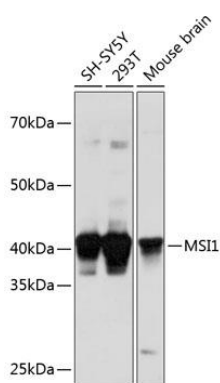
Immunogen:

A synthetic peptide corresponding to a sequence within amino acids 1-100 of human MSI1 (NP_002433.1).

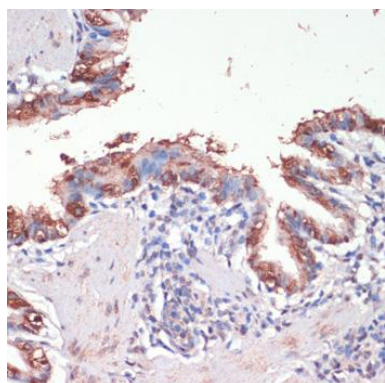
Storage:

Store at -20°C. Avoid freeze / thaw cycles. Buffer: PBS with 0.02% sodium azide, 50% glycerol, pH7.3.

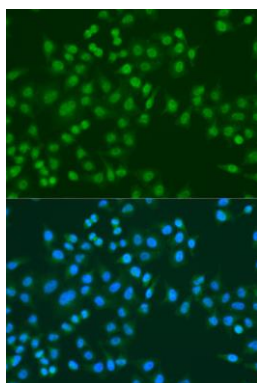
Product Images



Western blot analysis of extracts of various cell lines, using MSI1 Polyclonal Antibody (CAB2609) at 1:1000 dilution. Secondary antibody: HRP Goat Anti-Rabbit IgG (H+L) (CABS014) at 1:10000 dilution. Lysates/proteins: 25ug per lane. Blocking buffer: 3% nonfat dry milk in TBST. Detection: ECL Basic Kit (CABM00020). Exposure time: 30s.



Immunohistochemistry of paraffin-embedded rat lung using MSI1 antibody (CAB2609) at dilution of 1:200 (40x lens).



Immunofluorescence analysis of U2OS cells using MSI1 antibody (CAB2609) at dilution of 1:100. Blue: DAPI for nuclear staining.