

MAPKBP1 Rabbit Polyclonal Antibody



CAB2626

Product Information

Size:

20uL, 50uL, 100uL, 200uL

Observed MW:

164kDa

Calculated MW:

23kDa/109kDa/134kDa/149kDa/163kDa

Applications:

WB IHC

Reactivity:

Human, Mouse, Rat

Antibody Information

Recommended dilutions:

WB 1:500 - 1:2000 IHC 1:50 - 1:100

Source:

Rabbit

Isotype:

IgG

Purification:

Affinity purification

Protein Background

This gene encodes a scaffold protein that regulates the JNK (c-Jun N-terminal kinase) and NOD2 (nucleotide-binding oligomerization domain-containing protein 2) signaling pathways. The encoded protein interacts with another related JNK pathway scaffold protein, WDR62, via a conserved dimerization domain, and enhances JNK signaling. This protein may play a role in bacterial immunity by binding to the NOD2 receptor and negatively regulating downstream antibacterial and pro-inflammatory signaling. Mutations in this gene that impair cellular localization of the encoded protein cause a form of nephronophthisis, an autosomal-recessive kidney disorder, in human patients.

Immunogen information

Gene ID:

23005

Uniprot

O60336

Synonyms:

MAPKBP1; JNKBP-1; JNKBP1; NPHP20

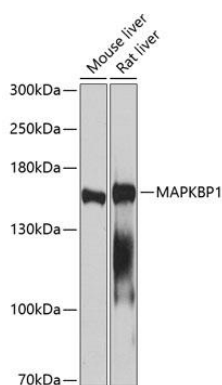
Immunogen:

A synthetic peptide corresponding to a sequence within amino acids 1-100 of human MAPKBP1 (NP_001122080.1).

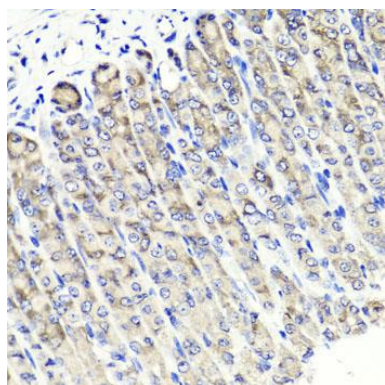
Storage:

Store at -20°C. Avoid freeze / thaw cycles. Buffer: PBS with 0.02% sodium azide, 50% glycerol, pH7.3.

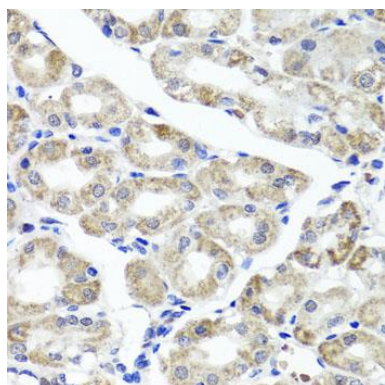
Product Images



Western blot analysis of extracts of various cell lines, using MAPKBP1 antibody (CAB2626) at 1:1000 dilution. Secondary antibody: HRP Goat Anti-Rabbit IgG (H+L) (CABS014) at 1:10000 dilution. Lysates/proteins: 25ug per lane. Blocking buffer: 3% nonfat dry milk in TBST. Detection: ECL Enhanced Kit (CABM00021). Exposure time: 60s.



Immunohistochemistry of paraffin-embedded mouse stomach using MAPKBP1 antibody (CAB2626) at dilution of 1:100 (40x lens).



Immunohistochemistry of paraffin-embedded human stomach using MAPKBP1 antibody (CAB2626) at dilution of 1:100 (40x lens).