

APLP1 Rabbit Polyclonal Antibody



CAB2634

Product Information

Size:

20uL, 50uL, 100uL, 200uL

Observed MW:

65-70kDa

Calculated MW:

72kDa

Applications:

WB IHC

Reactivity:

Human, Mouse, Rat

Antibody Information

Recommended dilutions:

WB 1:500 - 1:2000 IHC 1:50
- 1:100

Source:

Rabbit

Isotype:

IgG

Purification:

Affinity purification

Protein Background

This gene encodes a member of the highly conserved amyloid precursor protein gene family. The encoded protein is a membrane-associated glycoprotein that is cleaved by secretases in a manner similar to amyloid beta A4 precursor protein cleavage. This cleavage liberates an intracellular cytoplasmic fragment that may act as a transcriptional activator. The encoded protein may also play a role in synaptic maturation during cortical development. Alternatively spliced transcript variants encoding different isoforms have been described.

Immunogen information

Gene ID:

333

Uniprot

P51693

Synonyms:

APLP1; APLP

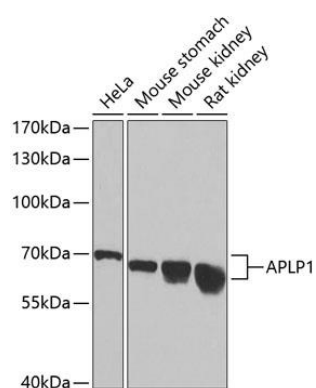
Immunogen:

Recombinant fusion protein containing a sequence corresponding to amino acids 39-300 of human APLP1 (NP_005157.1).

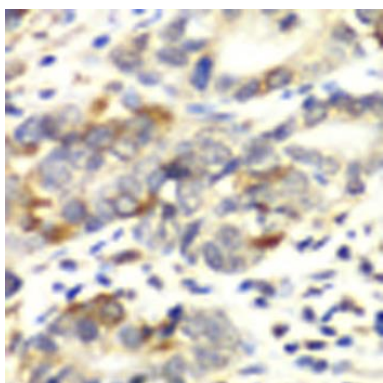
Storage:

Store at -20°C. Avoid freeze / thaw cycles. Buffer: PBS with 0.02% sodium azide, 50% glycerol, pH7.3.

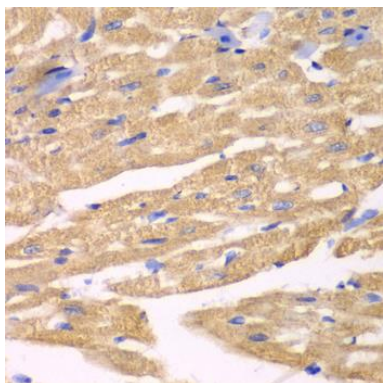
Product Images



Western blot analysis of extracts of various cell lines, using APLP1 antibody (CAB2634) at 1:1000 dilution. Secondary antibody: HRP Goat Anti-Rabbit IgG (H+L) (CABS014) at 1:10000 dilution. Lysates/proteins: 25ug per lane. Blocking buffer: 3% nonfat dry milk in TBST. Detection: ECL Basic Kit (CABM00020). Exposure time: 30s.



Immunohistochemistry of paraffin-embedded human colon carcinoma using APLP1 antibody (CAB2634) at dilution of 1:100 (40x lens).



Immunohistochemistry of paraffin-embedded mouse heart using APLP1 antibody (CAB2634) at dilution of 1:100 (40x lens).