

STAT4 Rabbit Polyclonal Antibody



CAB2638

Product Information

Size:

20uL, 50uL, 100uL, 200uL

Observed MW:

93kDa

Calculated MW:

85kDa

Applications:

WB IHC IF

Reactivity:

Human, Mouse, Rat

Protein Background

The protein encoded by this gene is a member of the STAT family of transcription factors. In response to cytokines and growth factors, STAT family members are phosphorylated by the receptor associated kinases, and then form homo- or heterodimers that translocate to the cell nucleus where they act as transcription activators. This protein is essential for mediating responses to IL12 in lymphocytes, and regulating the differentiation of T helper cells. Mutations in this gene may be associated with systemic lupus erythematosus and rheumatoid arthritis. Alternate splicing results in multiple transcript variants that encode the same protein.

Immunogen information

Gene ID:

6775

Uniprot

Q14765

Synonyms:

STAT4; SLEB11

Antibody Information

Recommended dilutions:

WB 1:500 - 1:2000 IHC 1:50
- 1:200 IF 1:50 - 1:200

Source:

Rabbit

Isotype:

IgG

Purification:

Affinity purification

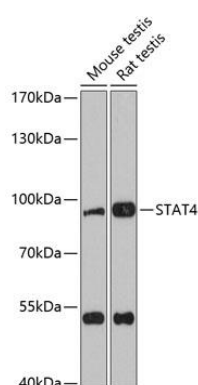
Immunogen:

A synthetic peptide corresponding to a sequence within amino acids 600-700 of human STAT4 (NP_001230764.1).

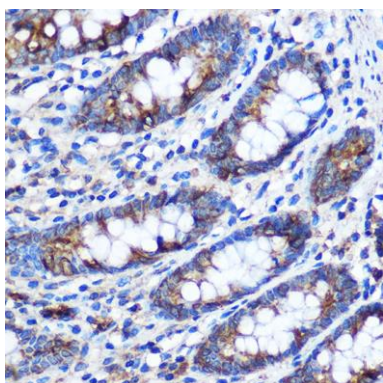
Storage:

Store at -20°C. Avoid freeze / thaw cycles. Buffer: PBS with 0.02% sodium azide, 50% glycerol, pH7.3.

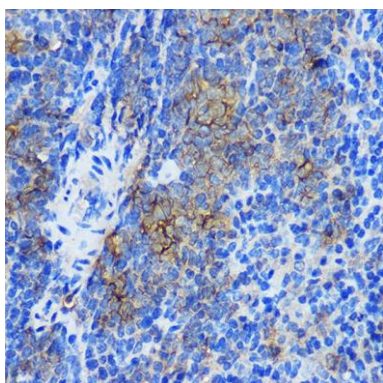
Product Images



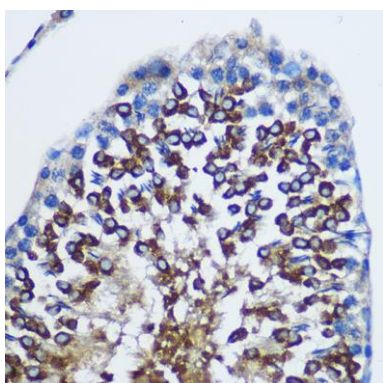
Western blot analysis of extracts of various cell lines, using STAT4 antibody (CAB2638) at 1:3000 dilution. Secondary antibody: HRP Goat Anti-Rabbit IgG (H+L) (CABS014) at 1:10000 dilution. Lysates/proteins: 25ug per lane. Blocking buffer: 3% nonfat dry milk in TBST. Detection: ECL Enhanced Kit (CABM00021). Exposure time: 90s.



Immunohistochemistry of paraffin-embedded Human colon using STAT4 Rabbit pAb (CAB2638) at dilution of 1:100 (40x lens).



Immunohistochemistry of paraffin-embedded Mouse spleen using STAT4 Rabbit pAb (CAB2638) at dilution of 1:100 (40x lens).



Immunohistochemistry of paraffin-embedded Rat testis using STAT4 Rabbit pAb (CAB2638) at dilution of 1:100 (40x lens).