

# COX5B Rabbit Polyclonal Antibody



CAB2640

## Product Information

### Size:

20uL, 50uL, 100uL, 200uL

### Observed MW:

14kDa

### Calculated MW:

13kDa

### Applications:

WB IHC IF IP

### Reactivity:

Human, Mouse, Rat

## Antibody Information

### Recommended dilutions:

WB 1:500 - 1:2000 IHC 1:50

- 1:100 IF 1:50 - 1:100 IP

1:50 - 1:100

### Source:

Rabbit

### Isotype:

IgG

### Purification:

Affinity purification

## Protein Background

Cytochrome C oxidase (COX) is the terminal enzyme of the mitochondrial respiratory chain. It is a multi-subunit enzyme complex that couples the transfer of electrons from cytochrome c to molecular oxygen and contributes to a proton electrochemical gradient across the inner mitochondrial membrane. The complex consists of 13 mitochondrial- and nuclear-encoded subunits. The mitochondrially-encoded subunits perform the electron transfer and proton pumping activities. The functions of the nuclear-encoded subunits are unknown but they may play a role in the regulation and assembly of the complex. This gene encodes the nuclear-encoded subunit Vb of the human mitochondrial respiratory chain enzyme.

## Immunogen information

### Gene ID:

1329

### Uniprot

P10606

### Synonyms:

COX5B; COXVB

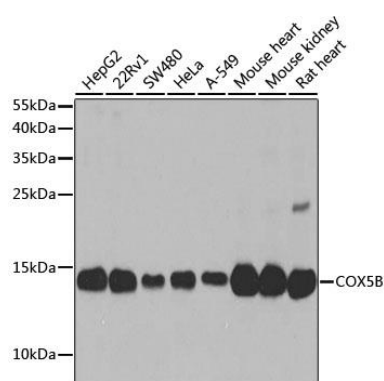
### Immunogen:

Recombinant fusion protein containing a sequence corresponding to amino acids 32-129 of human COX5B (NP\_001853.2).

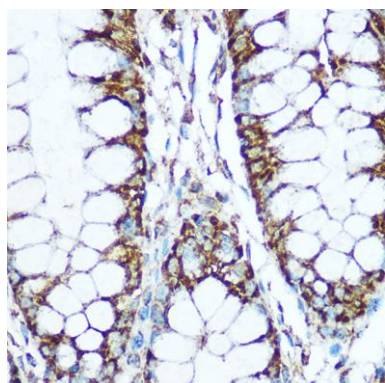
### Storage:

Store at -20°C. Avoid freeze / thaw cycles. Buffer: PBS with 0.02% sodium azide, 50% glycerol, pH7.3.

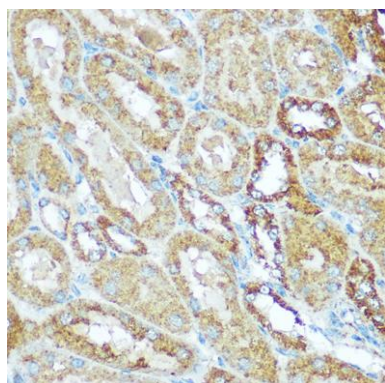
## Product Images



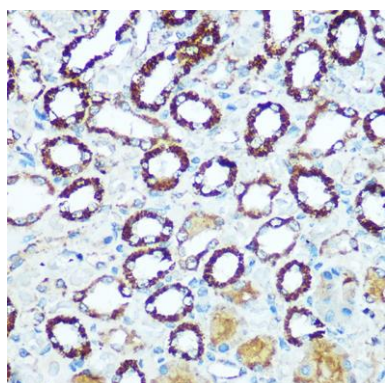
Western blot analysis of extracts of various cell lines, using COX5B antibody (CAB2640) at 1:1000 dilution. Secondary antibody: HRP Goat Anti-Rabbit IgG (H+L) (CABS014) at 1:10000 dilution. Lysates/proteins: 25ug per lane. Blocking buffer: 3% nonfat dry milk in TBST. Detection: ECL Enhanced Kit (CABM00021). Exposure time: 30s.



Immunohistochemistry of paraffin-embedded human colon using COX5B Rabbit pAb (CAB2640) at dilution of 1:100 (40x lens).



Immunohistochemistry of paraffin-embedded mouse kidney using COX5B Rabbit pAb (CAB2640) at dilution of 1:100 (40x lens).



Immunohistochemistry of paraffin-embedded rat kidney using COX5B Rabbit pAb (CAB2640) at dilution of 1:100 (40x lens).