

# ABCB8 Rabbit Polyclonal Antibody



CAB2653

---

## Product Information

### Size:

20uL, 50uL, 100uL, 200uL

### Observed MW:

80kDa

### Calculated MW:

59kDa/68kDa/75kDa/78kDa/  
79kDa

### Applications:

WB IHC IF

### Reactivity:

Human, Mouse, Rat

## Protein Background

This nuclear gene encodes a multi-pass membrane protein that is targeted to the mitochondrial inner membrane. The encoded protein is an ATP-dependent transporter that may mediate the passage of organic and inorganic molecules out of the mitochondria. Loss of function of the related gene in mouse results in a disruption of iron homeostasis between the mitochondria and cytosol. Alternative splicing results in multiple transcript variants.

## Immunogen information

### Gene ID:

11194

### Uniprot

Q9NUT2

### Synonyms:

ABCB8; EST328128; M-ABC1; MABC1

## Antibody Information

### Recommended dilutions:

WB 1:500 - 1:2000 IHC 1:50  
- 1:100 IF 1:50 - 1:100

### Source:

Rabbit

### Isotype:

IgG

### Purification:

Affinity purification

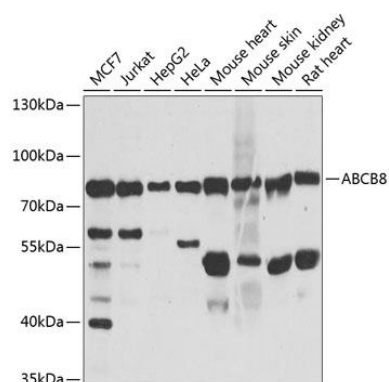
### Immunogen:

Recombinant fusion protein containing a sequence corresponding to amino acids 469-718 of human ABCB8 (NP\_009119.2).

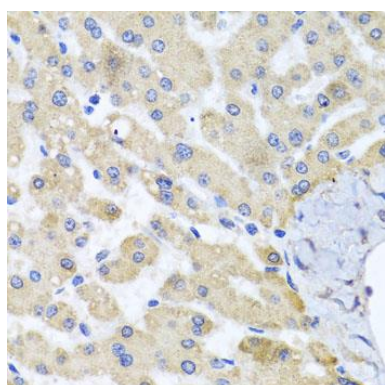
### Storage:

Store at -20°C. Avoid freeze / thaw cycles. Buffer: PBS with 0.02% sodium azide, 50% glycerol, pH7.3.

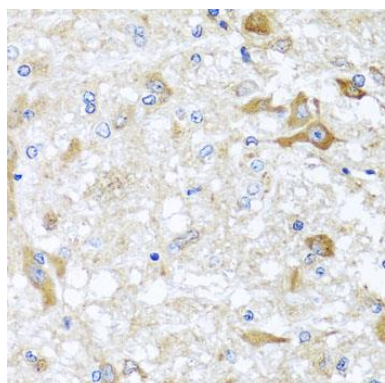
## Product Images



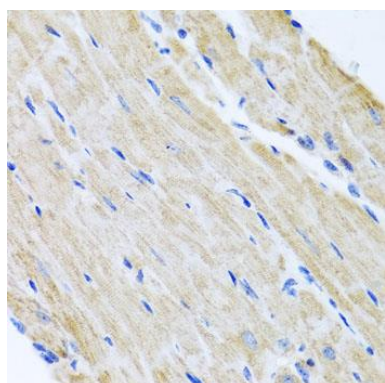
Western blot analysis of extracts of various cell lines, using ABCB8 antibody (CAB2653) at 1:1000 dilution. Secondary antibody: HRP Goat Anti-Rabbit IgG (H+L) (CABS014) at 1:10000 dilution. Lysates/proteins: 25ug per lane. Blocking buffer: 3% nonfat dry milk in TBST. Detection: ECL Basic Kit (CABM00020). Exposure time: 5s.



Immunohistochemistry of paraffin-embedded human liver tissue using ABCB8 antibody (CAB2653) at dilution of 1:100 (40x lens).



Immunohistochemistry of paraffin-embedded rat brain tissue using ABCB8 antibody (CAB2653) at dilution of 1:100 (40x lens).



Immunohistochemistry of paraffin-embedded mouse heart tissue using ABCB8 antibody (CAB2653) at dilution of 1:100 (40x lens).