

KRT15 Rabbit Polyclonal Antibody



CAB2660

Product Information

Size:

20uL, 50uL, 100uL, 200uL

Observed MW:

47-50kDa

Calculated MW:

28kDa/49kDa

Applications:

WB IHC

Reactivity:

Human

Protein Background

The protein encoded by this gene is a member of the keratin gene family. The keratins are intermediate filament proteins responsible for the structural integrity of epithelial cells and are subdivided into cytokeratins and hair keratins. Most of the type I cytokeratins consist of acidic proteins which are arranged in pairs of heterotypic keratin chains and are clustered in a region on chromosome 17q21.2.

Immunogen information

Gene ID:

3866

Uniprot

P19012

Synonyms:

KRT15; CK15; K15; K1CO

Antibody Information

Recommended dilutions:

WB 1:500 - 1:2000 IHC 1:50
- 1:200

Source:

Rabbit

Isotype:

IgG

Purification:

Affinity purification

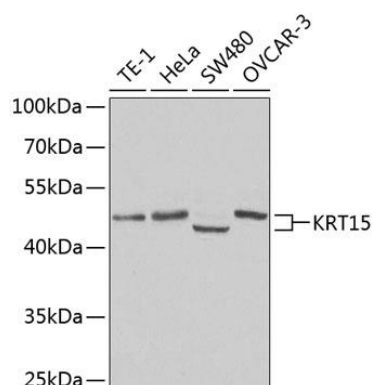
Immunogen:

Recombinant protein of human KRT15

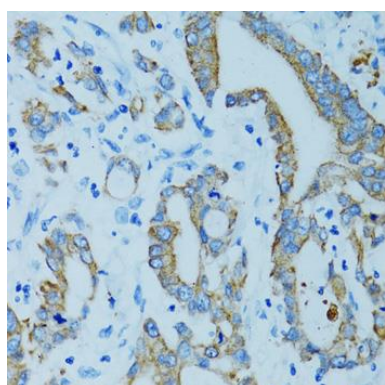
Storage:

Store at -20°C. Avoid freeze / thaw cycles. Buffer: PBS with 0.02% sodium azide, 50% glycerol, pH7.3.

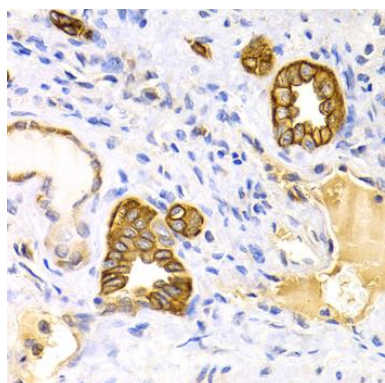
Product Images



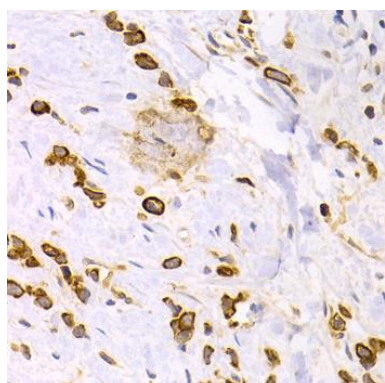
Western blot analysis of extracts of various cell lines, using KRT15 antibody (CAB2660) at 1:400 dilution. Secondary antibody: HRP Goat Anti-Rabbit IgG (H+L) (CABS014) at 1:10000 dilution. Lysates/proteins: 25ug per lane. Blocking buffer: 3% nonfat dry milk in TBST.



Immunohistochemistry of paraffin-embedded human colon carcinoma using KRT15 antibody (CAB2660) at dilution of 1:100 (40x lens).



Immunohistochemistry of paraffin-embedded human kidney using KRT15 antibody (CAB2660) at dilution of 1:200 (40x lens).



Immunohistochemistry of paraffin-embedded human gastric cancer using KRT15 antibody (CAB2660) at dilution of 1:200 (40x lens).