

BTG3 Rabbit Polyclonal Antibody



CAB2669

Product Information

Size:

50uL, 100uL, 200uL

Observed MW:

29kDa

Calculated MW:

29kDa/34kDa

Applications:

WB IHC

Reactivity:

Human

Protein Background

The protein encoded by this gene is a member of the BTG/Tob family. This family has structurally related proteins that appear to have antiproliferative properties. This encoded protein might play a role in neurogenesis in the central nervous system. Two transcript variants encoding different isoforms have been found for this gene.

Immunogen information

Gene ID:

10950

Uniprot

Q14201

Synonyms:

BTG3; ANA; ANA/BTG3; APRO4; TOB5; TOB55; TOFA

Antibody Information

Recommended dilutions:

WB 1:200 - 1:1000 IHC 1:25
- 1:100

Source:

Rabbit

Isotype:

IgG

Purification:

Affinity purification

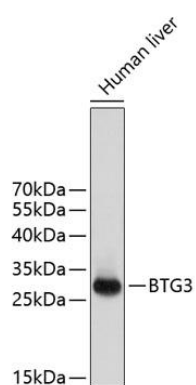
Immunogen:

Recombinant protein of human BTG3

Storage:

Store at -20°C. Avoid freeze / thaw cycles. Buffer: PBS with 0.02% sodium azide, 50% glycerol, pH7.3.

Product Images



Western blot analysis of extracts of human liver, using BTG3 antibody (CAB2669). Secondary antibody: HRP Goat Anti-Rabbit IgG (H+L) (CABS014) at 1:10000 dilution. Lysates/proteins: 25ug per lane. Blocking buffer: 3% nonfat dry milk in TBST.